

[Back to home](#)



Search for all of your Innova Hycross here.

## Key information

[Opening, closing and locking the doors](#)

[Adjusting the seats](#)

[Adjusting the steering wheel and mirrors](#)

[Opening, closing the windows and moon roof](#)

[Favorite settings](#)

# BEFORE DRIVING

## Opening, closing and locking the doors

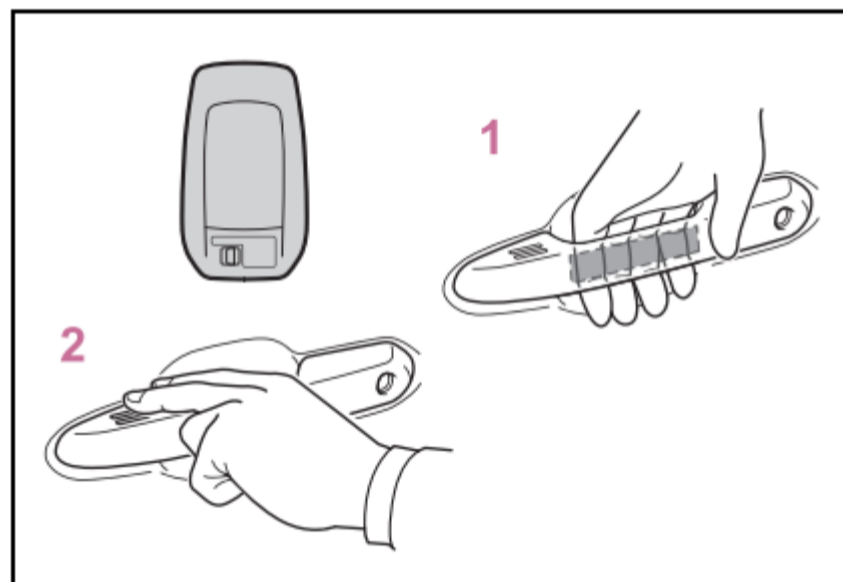
### Side doors

**The vehicle can be locked and unlocked using the entry function (if equipped), wireless remote control, door lock switches or inside lock buttons.**

### Unlocking and locking the doors from the outside

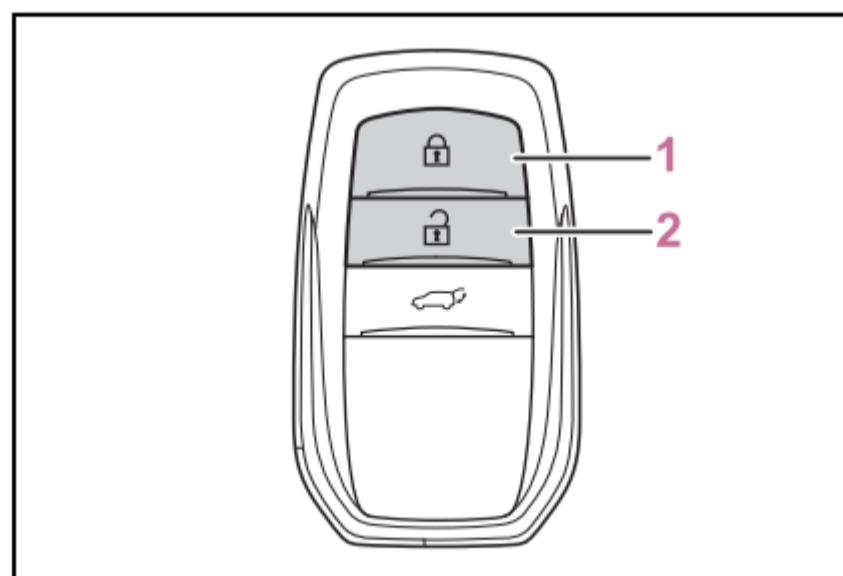
#### ■ Using the entry function (vehicles with entry function)

Carry the electronic key to enable this function.



- Grip the front door handle to unlock the doors.  
Make sure to touch the sensor on the back of the handle.  
The doors cannot be unlocked for 3 seconds after the doors are locked.
- Touch the lock sensor (the indentation on the upper part of the front door handle) to lock the doors.  
Check that the door is securely locked.

#### ■ Using the wireless remote control



- Locks all the doors  
Check that the door is securely locked.  
Press and hold to close the side windows and panoramic moon roof (if equipped).\*
- Unlocks all the doors  
Press and hold to open the side windows and panoramic moon roof (if equipped).\*

\* : These settings must be customized at your Toyota dealer.

### ■ Impact detection door lock release system (if equipped)

In the event that the vehicle is subject to a strong impact, all the doors are unlocked. Depending on the force of the impact or the type of accident, however, the system may not operate.

### ■ Operation signals

Doors: A buzzer (if equipped) sounds and the emergency flashers flash to indicate that the doors have been locked/unlocked using the entry function (if equipped) or wireless remote control. (Locked: Once; Unlocked: Twice)

Side windows and panoramic moon roof (if equipped): A buzzer (if equipped) sounds to indicate that the side windows and panoramic moon roof are operating using the wireless remote control.

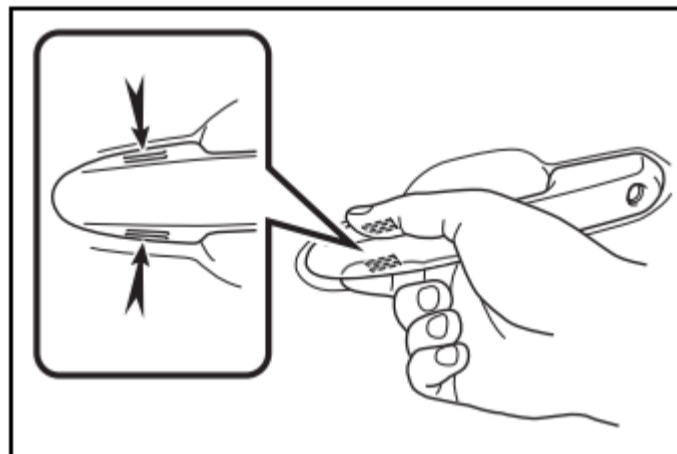
### ■ Security feature

If a door is not opened within approximately 30 seconds after the vehicle is unlocked using the entry function (if equipped) or wireless remote control, the security feature automatically locks the vehicle again. (However, depending on the location of the electronic key, the key may be detected as being in the vehicle. In this case, vehicle may be unlocked.)

### ■ When the door cannot be locked by the lock sensor on the upper part of the door handle (vehicles with entry function)

If the door will not lock even when the topside sensor area is touched, try touching both the topside and underside sensor areas at the same time.

When gloves are being worn, remove the gloves.



### ■ Door lock buzzer

A buzzer sounds continuously for 5 seconds in the following situations. Fully close all the doors and lock the vehicle once more.

- If an attempt to lock the doors using the smart entry & start system is made when a door other than the door you are locking is open.
- If an attempt to lock the doors using the wireless remote control is made when a door is open.

### ■ Setting the alarm (if equipped)

Locking the doors will set the alarm system. ([Click Here](#))

### ■ Conditions affecting the operation of the smart entry & start system or wireless remote control

([Click Here](#))

## ■ If the smart entry & start system or the wireless remote control does not operate properly

- Use the mechanical key to lock and unlock the doors.([Click Here](#))
- Replace the key battery with a new one if it is depleted.([Click Here](#))

## ■ If the 12-volt battery is discharged

The doors cannot be locked and unlocked using the smart entry & start system or wireless remote control. Lock or unlock the doors using the mechanical key.([Click Here](#))

## ■ Rear seat reminder function

- In order to remind you not to forget luggage, etc. in the rear seat, when the power switch is turned to OFF after any of the following conditions are met, a buzzer will sound and a message will be displayed on the multi-information display for approximately 6 seconds.
  - The hybrid system is started within 10 minutes after opening and closing a rear door.
  - A rear door has been opened and closed after the hybrid system was started.
 However, if a rear door is opened and then closed within approximately 2 seconds, the rear seat reminder function may not operate.
- The rear seat reminder function determines that luggage, etc. has been placed in a rear seat based on opening and closing of a rear door. Therefore, depending on the situation, the rear seat reminder function may not operate and you may still forget luggage, etc. in the rear seat, or it may operate unnecessarily.
- The rear seat reminder function can be enabled/disabled. ([Click Here](#))

## ■ Customization

Settings (e.g. unlocking function using a key) can be changed. (Customizable features:([Click Here](#))

### ⚠ WARNING

#### To prevent an accident

Observe the following precautions while driving the vehicle. Failure to do so may result in a door opening and an occupant could be thrown out of the vehicle, resulting in death or serious injury.

- Ensure that all doors are properly closed and locked.
- Do not pull the inside handle of the doors while driving.
  - Be especially careful for the driver's door, as the door may be opened even if the inside lock button is in locked position.
- Set the rear door child-protector locks when children are seated in the rear seats. (if equipped)

#### When opening or closing a door

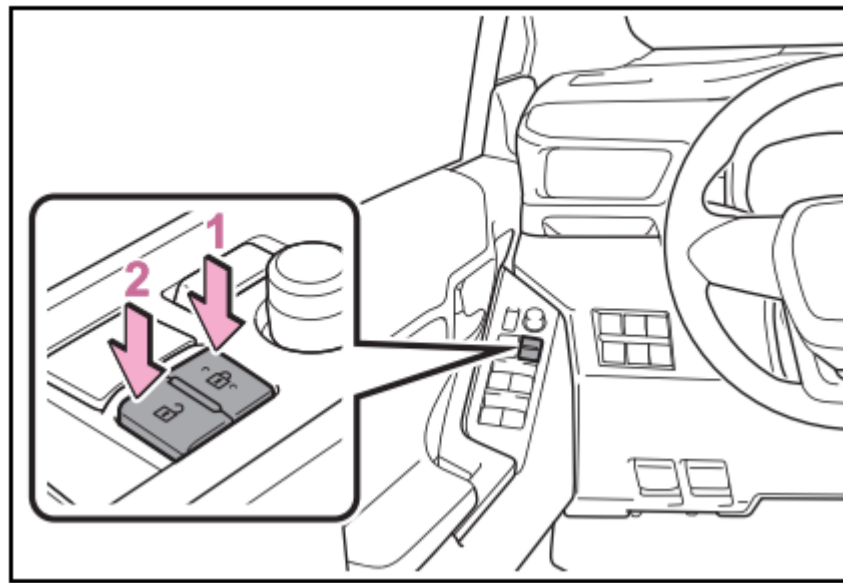
Check the surroundings of the vehicle such as whether the vehicle is on an incline, whether there is enough space for a door to open and whether a strong wind is blowing. When opening or closing the door, hold the door handle tightly to prepare for any unpredictable movement.

#### When using the wireless remote control or mechanical key and operating the power windows or panoramic moon roof (if equipped)

Operate the power window or panoramic moon roof after checking to make sure that there is no possibility of any passenger having any of their body parts caught in the side window or panoramic moon roof. Also, do not allow children to operate the wireless remote control or mechanical key. It is possible for children and other passengers to get caught in the side window or panoramic moon roof.

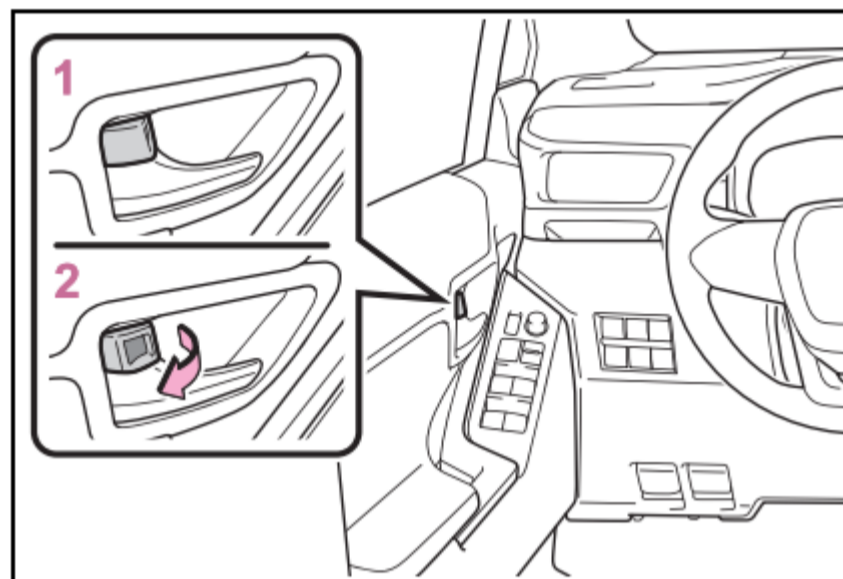
## Unlocking and locking the doors from the inside

### ■ Using the door lock switches



1. Locks all the doors
2. Unlocks all the door

#### ■ Using the inside lock buttons



1. Locks the door
2. Unlocks the door

The driver's door can be opened by pulling the inside handle even if the lock button is in the lock position.

#### ■ Locking the front doors from the outside without a key

1. Move the inside lock button to the lock position.
2. Close the door while pulling the door handle.

The door cannot be locked if the power switch is in ACC or ON, or the electronic key is left inside the vehicle.

Depending on the position of the electronic key, the key may not be detected correctly and the door may be locked.

#### ■ Open door warning buzzer

If the vehicle speed reaches 5 km/h (3 mph), a buzzer sounds to indicate that the door(s) or the hood is not fully closed.

The open door(s) or hood is displayed on the multi-information display.

#### ■ When all the doors are locked with the entry function (if equipped) or wireless remote control

- The doors cannot be unlocked with the door lock switch.
- The door lock switches can be reset by unlocking all the doors with the entry function or wireless remote control.

#### Rear door child-protector lock (if equipped)

The door cannot be opened from inside the vehicle when the lock is set.



1. Unlock
2. Lock

These locks can be set to prevent children from opening the rear doors. Push down on each rear door switch to lock both rear doors.

### Automatic door locking and unlocking systems (if equipped)



The following functions can be set or canceled:

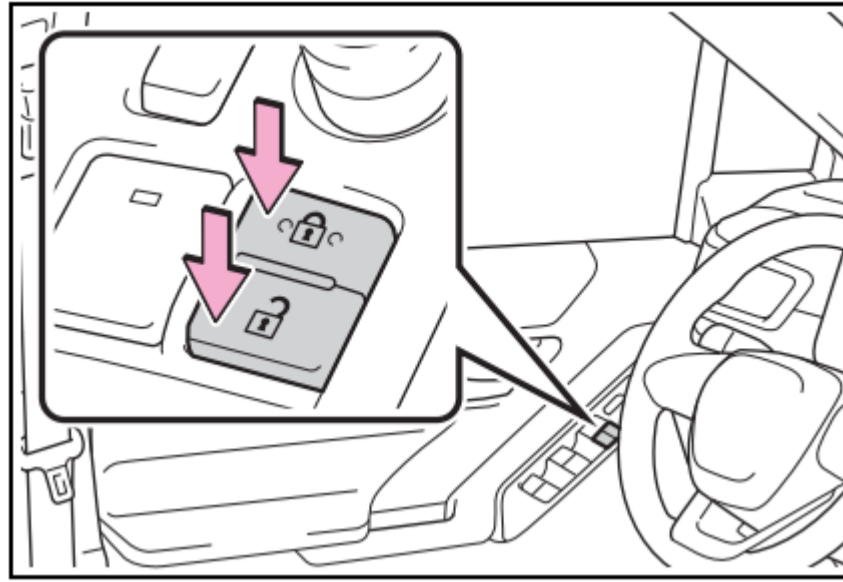
For instructions on customizing, refer to [\(Click Here\)](#), [\(Click Here\)](#)

Function	Operation
Speed linked door locking function	All doors are automatically locked when vehicle speed is approximately 20 km/h (12 mph) or higher. (Vehicles without impact detection door lock release system: Even if the vehicle is subject to a strong impact, all the doors will not be unlocked automatically.)
Shift position linked door locking function	All doors are automatically locked when shifting the shift lever to position other than P.
Shift position linked door unlocking function	All doors are automatically unlocked when shifting the shift lever to P.
Driver's door linked door unlocking function	All doors are automatically unlocked when driver's door is opened within approximately 45 seconds after turning the power switch to OFF.

### ■ Setting and canceling the functions



To switch between setting and canceling, follow the procedure below.

1. Close all the doors and turn the power switch to ON. (Perform step 2 within 20 seconds.)
2. Shift the shift lever to P or N, and press and hold the driver's door lock switch (  or  ) for approximately 5 seconds and then release.





The shift lever and switch positions corresponding to the desired function to be set are shown in the following table. Use the same procedure to cancel the function.

- Shift lever in P

Function	Driver's door lock switch position
Shift position linked door locking function	
Shift position linked door unlocking function	

- Shift lever in N

Function	Driver's door lock switch position
Speed linked door locking function	
Driver's door linked door unlocking function	

When the setting or canceling operation is complete, all the doors are locked and then unlocked.