

[Back to home](#)[Specifications](#)[Customization](#)[Intialization](#)

Search for all of your Innova Hycross here.

VEHICLE SPECIFICATIONS

Specifications

Maintenance data (fuel,oil level,etc.)

Dimensions

Overall length		4755 mm (187.2 in.) ^{*2}
		4760 mm (187.4 in.) ^{*3}
Overall width		1845 mm (72.6 in.) ^{*4}
		1850 mm (72.8 in.) ^{*5}
Overall height ^{*1}		1795 mm (70.7 in.)
Wheelbase		2850 mm (112.2 in.)
Tread	Front	1560 mm (61.4 in.) ^{*7}
		1550 mm (61.0 in.) ^{*8}
	Rear	1580 mm (62.2 in.) ^{*7}
		1570 mm (61.8 in.) ^{*8}

*1: Unladen vehicle

*2: Vehicles without rear fog light

*3: Vehicles with rear fog light

*4: Except for high grade*6

*5: For high grade*6

*6: See "Checking your vehicle's model" if you are not sure of which model your vehicle is. ([Click Here](#))

*7: Vehicles without 18-inch tires

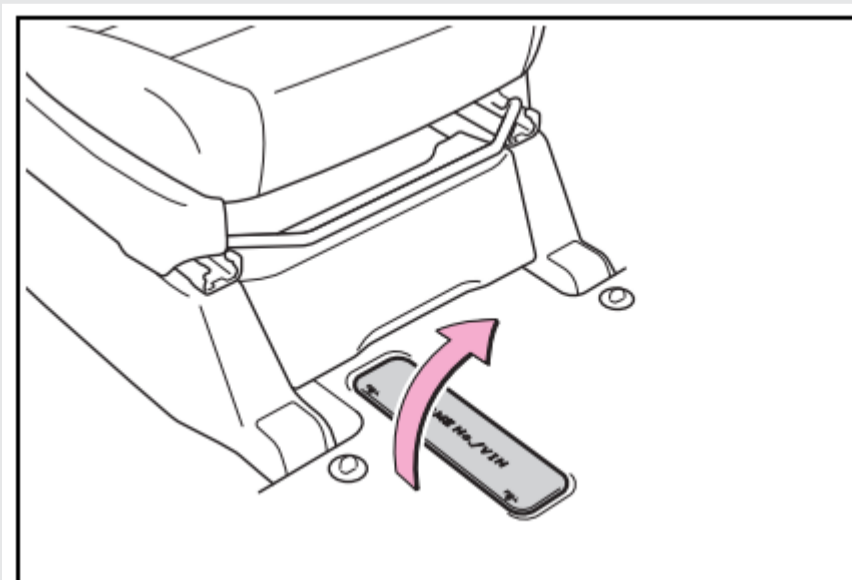
*8: Vehicles with 18-inch tires

Vehicle identification

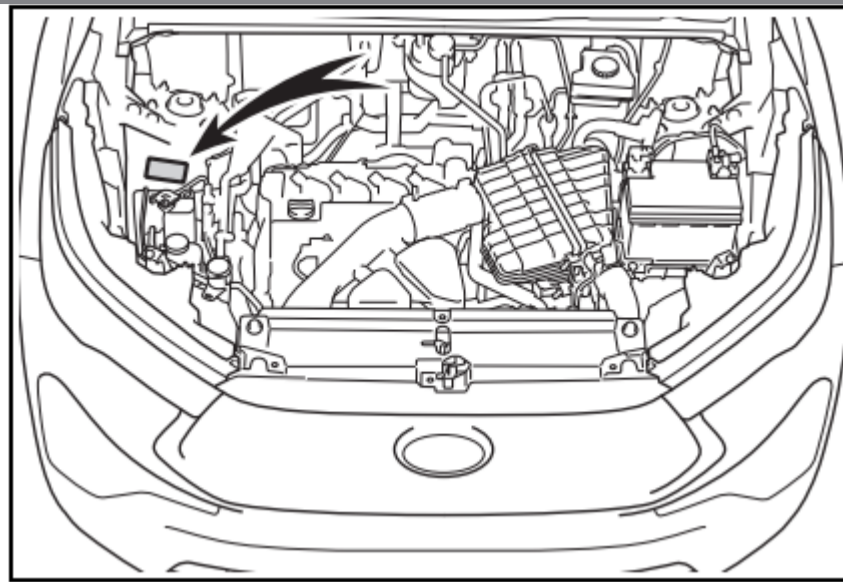
■ Vehicle identification number

The vehicle identification number (VIN) is the legal identifier for your vehicle. This is the primary identification number for your Toyota. It is used in registering the ownership of your vehicle.

This number is stamped under the right-hand front seat.

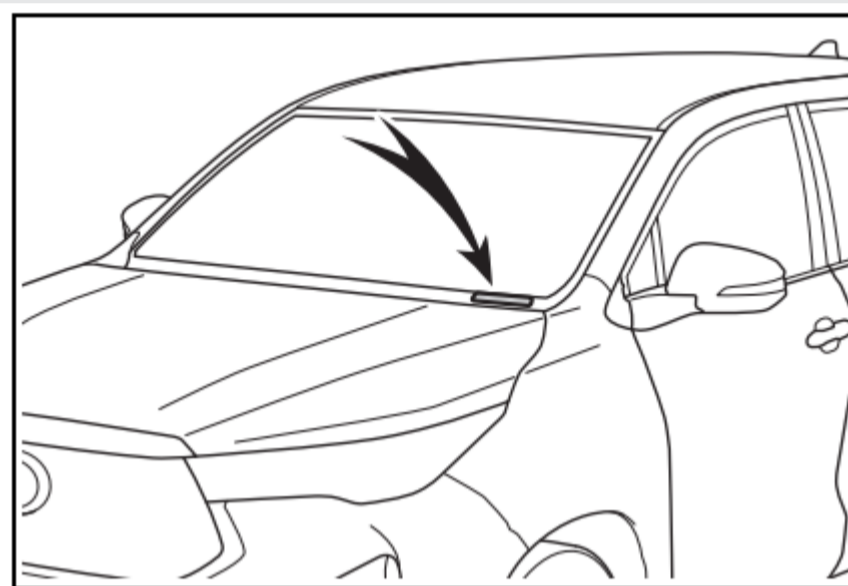


For models made in India* : This number is also on the manufacturer's plate.



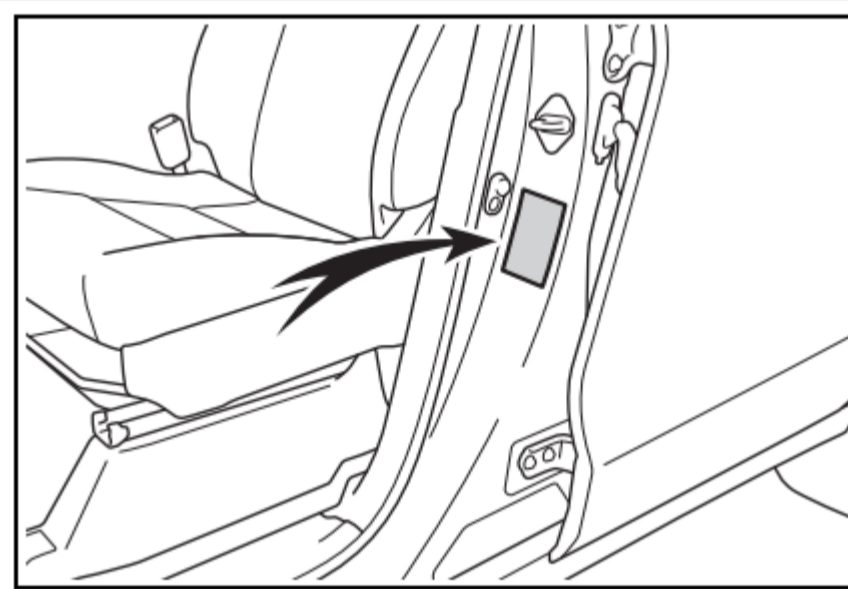
* : See “Checking your vehicle’s model” if you are not sure of which model your vehicle is. ([Click Here](#))

For GCC countries* , Iraq, Jordan and Lebanon: This number is also on the manufacturer’s plate.



* : Saudi Arabia, Sultanate of Oman, Bahrain, United Arab Emirates, Qatar, Kuwait
For models made in Indonesia*¹:

This number is also on the manufacturer’s label (except for GCC countries*², Iraq, Jordan and Lebanon) or Certification Regulation label (for GCC countries*², Iraq, Jordan and Lebanon).



*¹: See “Checking your vehicle’s model” if you are not sure of which model your vehicle is. ([Click Here](#))

*²: Saudi Arabia, Sultanate of Oman, Bahrain, United Arab Emirates, Qatar, Kuwait

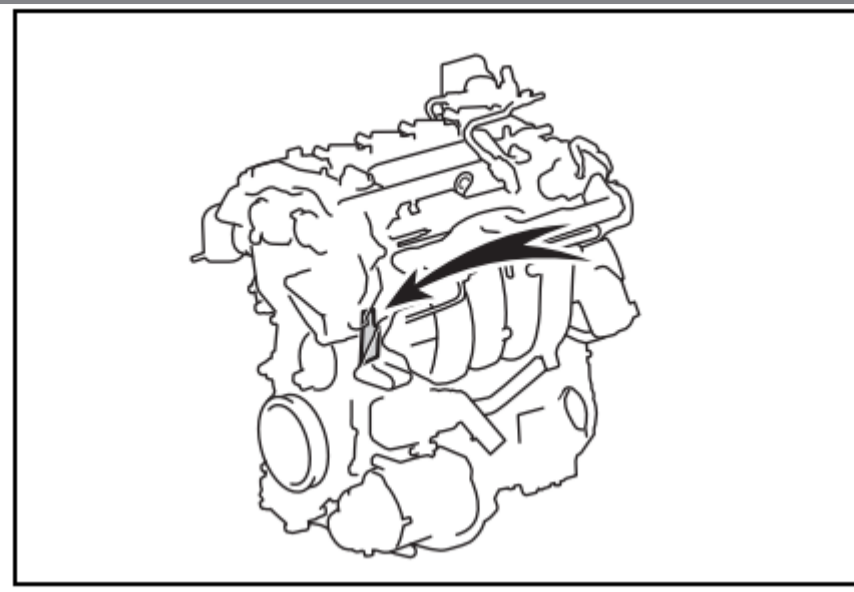
■ Year of manufacture and country of origin (GCC countries* , Iraq, Jordan and Lebanon)

The year of the manufacture and country of origin are shown on the Certification Regulation label.

* : Saudi Arabia, Sultanate of Oman, Bahrain, United Arab Emirates, Qatar, Kuwait

■ Engine number

The engine number is stamped on the engine block as shown.



Engine

Model	M20A-FXS
Type	4-cylinder in line, 4-cycle, gasoline
Bore and stroke	80.5 * 97.6 mm (3.17 * 3.84 in.)
Displacement	1987 cm ³ (121.3 cu. in.)
Valve clearance	Automatic adjustment
Maximum vehicle speed* ¹	170 km/h (105 mph)
Maximum torque (NET)* ¹	188 N•m @ 4400 - 5200 rpm
Maximum output (NET)* ¹	112 kW @ 6000 rpm

*¹: For vehicles with model code*² that has "V" as the last letter

*²: The model code is indicated on the manufacturer's label or the Certification Regulation label. ([Click Here](#))

Fuel

Fuel type	Unleaded gasoline only
Research Octane Number	91 or higher
Fuel tank capacity (Reference)	52 L (13.7 gal., 11.4 Imp.gal.)

Electric motor (traction motor)

Type	Permanent magnet synchronous motor
Maximum output	83 kW
Maximum torque	206 N•m (21.0 kgf•m, 152 ft•lbf)

Hybrid battery (traction battery)

Type	Nickel-Metal hydride battery
------	------------------------------

Voltage	7.2 V/module
Capacity	6.5 Ah
Quantity	28 modules
Nominal voltage	201.6 V

Lubrication system

■ Oil capacity (Drain and refill [Reference*])

With filter	4.6 L (4.9 qt., 4.0 Imp. qt.)
Without filter	4.3 L (4.5 qt., 3.8 Imp. qt.)

* : The engine oil capacity is a reference quantity to be used when changing the engine oil. When actually adding the engine oil, make sure that the oil level is between the low level mark and refill upper limit mark ([Click Here](#)). Warm up the engine and turn off the hybrid system, wait about 5 minutes, and check the oil level on the dipstick.

■ Engine oil selection

“Toyota Genuine Motor Oil” is used in your Toyota vehicle. Use Toyota approved “Toyota Genuine Motor Oil” or equivalent to satisfy the following grade and viscosity.

Oil grade:

OW-16:

API grade SN “Resource-Conserving”, SN PLUS “Resource-Conserving” or SP “Resource-Conserving”; or ILSAC GF-6B multigrade engine oil

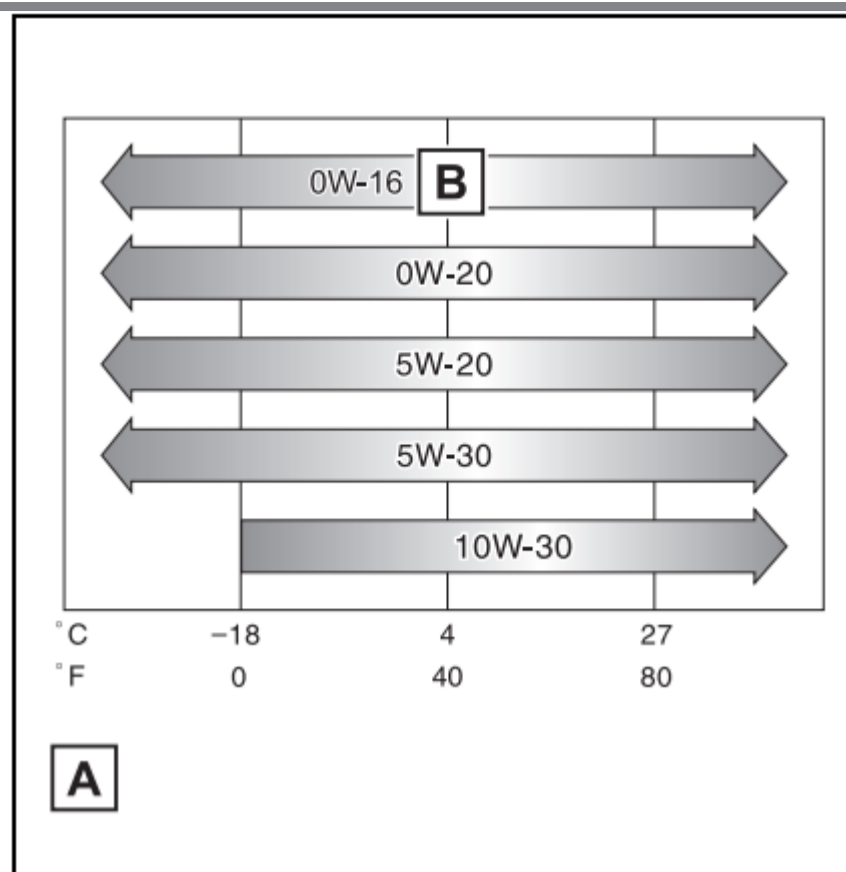
OW-20, 5W-20, 5W-30 and 10W-30:

API grade SL “Energy-Conserving”, SM “Energy-Conserving”, SN “Resource-Conserving”, SN PLUS “Resource-Conserving” or SP “Resource-Conserving”; or ILSAC GF-6A multigrade engine oil

Recommended viscosity (SAE):

SAE OW-16 is filled into your Toyota vehicle at manufacturing, and the best choice for good fuel economy and good starting in cold weather.

If you use SAE 10W-30 or a higher viscosity engine oil in extremely low temperatures, the engine may become difficult to start, so SAE OW-16, OW-20, 5W-20 or 5W-30 engine oil is recommended.



A Temperature range anticipated before next oil change

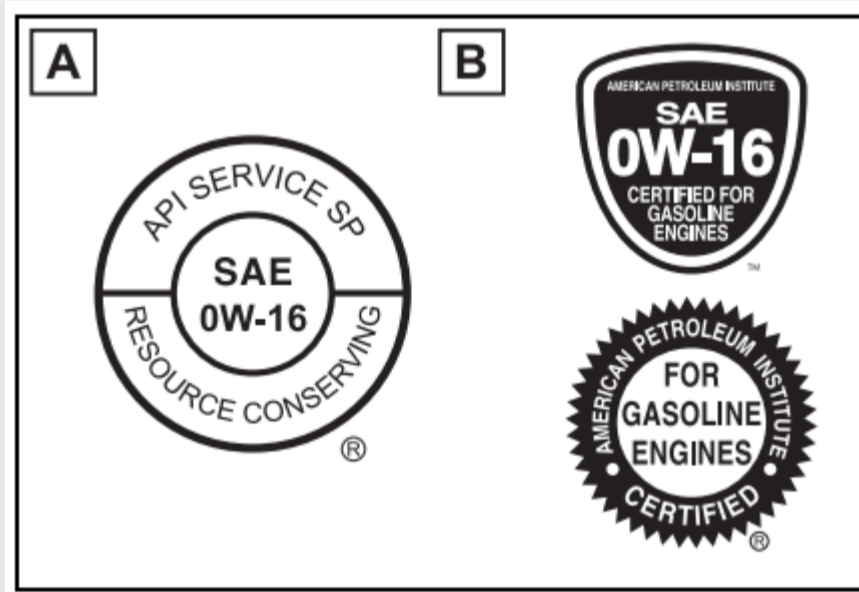
B Preferred

Oil viscosity (0W-16 is explained here as an example):

- The 0W in 0W-16 indicates the characteristic of the oil which allows cold startability. Oils with a lower value before the W allow for easier starting of the engine in cold weather.
- The 16 in 0W-16 indicates the viscosity characteristic of the oil when the oil is at high temperature. An oil with a higher viscosity (one with a higher value) may be better suited if the vehicle is operated at high speeds, or under extreme load conditions.

How to read oil container labels:

Either or both API registered marks are added to some oil containers to help you select the oil you should use.



A API Service Symbol

Top portion: "API SERVICE SP" means the oil quality designation by American Petroleum Institute (API).

Center portion: "SAE 0W-16" means the SAE viscosity grade.

Lower portion: "Resource-Conserving" means that the oil has fuel-saving and environmental protection capabilities.

B ILSAC Certification Mark

The International Lubricant Specification Advisory Committee (ILSAC) Certification Mark is displayed on the front of the container.

Cooling system

Capacity*	Gasoline engine	<p>▶ Vehicles without rear automatic air conditioning system</p> <p>5.6 L (5.9 qt., 4.9 Imp. qt.)</p> <p>▶ Vehicles with rear automatic air conditioning system</p> <p>7.2 L (7.6 qt., 6.3 Imp. qt.)</p>
	Power control unit	1.7 L (1.8 qt., 1.5 Imp. qt.)
Coolant type	<p>Use either of the following:</p> <ul style="list-style-type: none"> • "Toyota Super Long Life Coolant" • Similar high-quality ethylene glycol-based non-silicate, non-amine, non-nitrite, and non-borate coolant with long-life hybrid organic acid technology <p>Do not use plain water alone.</p>	

*: The coolant capacity is the quantity of reference.
If replacement is necessary, contact your Toyota dealer.

Ignition system (spark plug)

Make	DENSO FC16HR-Q8
Gap	0.8 mm (0.031 in.)

⚠ NOTICE

Iridium-tipped spark plugs

Use only iridium-tipped spark plugs. Do not adjust the spark plug gap.

Electrical system (12-volt Battery)

Specific gravity reading at 20°C (68°F):	1.25 or higher If the specific gravity is lower than the standard value, charge the battery.	
Charging rates	Quick charge	15 A max.
	Slow charge	5 A max.

Hybrid transmission

Fluid capacity*	3.7 L (3.9 qt., 3.3 Imp.qt.)
Fluid type	Toyota Genuine e-Transaxle Fluid TE

*: The fluid capacity is the quantity of reference.
If replacement is necessary, contact your Toyota dealer.

⚠ NOTICE

Hybrid transmission fluid type

Using transmission fluid other than the above type may cause abnormal noise or vibration, or ultimately damage the transmission of your vehicle.

Brakes

Pedal clearance*	<p>▶ Left-hand drive vehicles</p> <p>136.1 mm (5.4 in.)</p> <p>▶ Right-hand drive vehicles</p> <p>136.4 mm (5.4 in.)</p>
------------------	--

Pedal free play	1.0 -- 6.0 mm (0.04 -- 0.24 in.)
Fluid type	SAE J1703 or FMVSS No. 116 DOT 3 SAE J1704 or FMVSS No. 116 DOT 4

* : Minimum pedal clearance when depressed with a force of 300 N (30.6 kgf, 67.4 lbf) while the hybrid system is operating.

Steering

Free play	Less than 30 mm (1.2 in.)
-----------	---------------------------

Tires and wheel

■ 16-inch tires

Tire size	205/65R16 95S ^{*1} , 205/65R16 95H ^{*2}		
Tire inflation pressure (Recommended cold tire inflation pressure)	The number of passengers	Front wheel kPa (kgf/cm ² or bar, psi)	Rear wheel kPa (kgf/cm ² or bar, psi)
	Up to 6 occupants	230 (2.3, 33)	230 (2.3, 33)
	More than 7 occupants	230 (2.3, 33)	250 (2.5, 36)
Wheel size	16 × 6J		
Wheel nut torque	103 N•m (10.5 kgf•m, 76 ft•lbf)		

*1: Models made in India*³ *2: Models made in Indonesia*³ *3: See "Checking your vehicle's model" if you are not sure of which model your vehicle is.([Click Here](#))

■ 17-inch tire

Tire size	215/60R17 96H		
Tire inflation pressure (Recommended cold tire inflation pressure)	The number of passengers	Front wheel kPa (kgf/cm ² or bar, psi)	Rear wheel kPa (kgf/cm ² or bar, psi)
	Up to 6 occupants	230 (2.3, 33)	230 (2.3, 33)
	More than 7 occupants	230 (2.3, 33)	250 (2.5, 36)
Wheel size	17 × 6 1/2J		
Wheel nut torque	103 N•m (10.5 kgf•m, 76 ft•lbf)		

■ 18-inch tires

Tire size	225/50R18 95V		
Tire inflation pressure (Recommended cold tire inflation pressure)	The number of passengers	Front wheel kPa (kgf/cm ² or bar, psi)	Rear wheel kPa (kgf/cm ² or bar, psi)
	Up to 6 occupants	230 (2.3, 33)	230 (2.3, 33)
	More than 7 occupants	230 (2.3, 33)	250 (2.5, 36)

Wheel size	18 × 7J
Wheel nut torque	103 N•m (10.5 kgf•m, 76 ft•lbf)

■ Spare tire

- Vehicles with spare tire of a different wheel type from the installed tires

Tire size	205/65R16 95S ^{*1} , 205/65R16 95H ^{*2}
Tire inflation pressure (Recommended cold tire inflation pressure)	230 kPa (2.3 kgf/cm ² or bar, 33 psi)
Wheel size	16 × 6J
Wheel nut torque	103 N•m (10.5 kgf•m, 76 ft•lbf)

^{*1}: Models made in India^{*3} ^{*2}: Models made in Indonesia^{*3} ^{*3}: See “Checking your vehicle’s model” if you are not sure of which model your vehicle is. ([Click Here](#))

- Vehicles with spare tire of the same wheel type from the installed tires See “16-inch tires”. ([Click Here](#))

■ Certification (for India)

The tires fitted on this vehicle meet the requirements of Indian Standard IS 15633 and they comply with the requirements of Rule 95 as specified under Central Motor Vehicle Rules (CMVR) 1989.

Light bulbs

	Light bulbs	W	Type
Exterior	Front position lights (bulb type) [*]	5	A
	Front turn signal lights (bulb type) [*]	21	B
	Rear turn signal lights	21	C
	Rear fog light [*]	21	D
	Back-up lights	16	A
	License plate lights	5	A
	Outer foot lights [*]	5	A
	Light bulbs	W	Type
Interior	Front personal/interior lights	8	A
	Rear interior light	8	E
	Rear personal lights [*]	5	A
	Vanity lights [*]	8	A
	Luggage compartment light	5	A

A: Wedge base bulbs (clear)

B: Single end bulbs (amber)

C: Wedge base bulbs (amber)

D: Single end bulbs (clear)

E: Double end bulbs

* : If equipped