

**THE ALL-NEW**  
**THAR**

**Mahindra**  
**GENUINE ACCESSORIES**

**Accessories Catalogue**

**Rev – 2.9 – June 2022**

## Thar Accessories – Index

Style	Comfort & Convenience	Technology	Safety & Security
Dark Lord (Style) Pack	Seat Cover	Reverse Camera	Body Covers
Intense Chrome Kit	Steering Cover	Remote Lock Key	Scuff Plates
Exterior Appliques	Canvas Seat Cover	Front Parking Sensor	Front & Rear Mud Flaps
Rain Visor	Canvas Seat Organizer	Vibe Speaker, Amplifier & Subwoofer	Radiator Protection Guard
Plastic Footstep	Floor Mats	Pioneer Head Unit & Speakers	Fuel Tank Protector
Body Decal	Lamination Mat	2-Din Head Unit Mounting Kit	Front Bumper Air Dam Kit
Alloy Wheels	Magnetic Sunshade	Dashboard & 2 <sup>nd</sup> Row Speaker Mounting Kit	
Wheel Cover	Snack Tray	NVH Reduction Kit	
Spare Wheel Cover	Sunshades		
Spare Wheel Cover Moulded			

### New Introduction (Slide No – 55 & 56)

- Vibe Under Seat Subwoofer
- Vibe Amplifier 60.4 – V9

# Style Accessories

# Dark Lord (Style) Pack



Front Bumper Cladding

Front Bumper Air Damper

Head Lamp Applique

Wheel Arch Cladding

ORVM Appliques

Tail Lamp Appliques

Side & Back Shoulder Appliques

PART DESCRIPTION	Applicability
Dark Lord (Style) Pack	All Variant

# Dark Lord (Style) Pack



## 1. Features

- Made up of High-quality Automotive PP Grade material which gives high flexible strength
- Offers highest level of dimensional accuracy
- Designed as per vehicle contour & Style to complete your vehicle

## 2. Advantages

- Classy Design gives stylish look to the vehicle
- Light weight & long-lasting life

## 3. Benefits

- Perfectly matching vehicle profile
- Easy to fit on double sided tape

## 4. Technical Specification

- Automotive PP Grade Material
- Mounted with 3M PT1100 double sided tape
- Designed & Validated accessories
- Warranty – 1 Year (Manufacturing Defects)

PART NUMBER	PART DESCRIPTION	Applicability
AT00094	Front Bumper Cladding	All Variant
AT00091	Front Bumper Air Dam Kit	All Variant
AT00095	Front Grill Cladding	All Variant
AT00164	Piano Black Headlamp Appliques	All Variant
AT00166	Piano Black Mirror Appliques	All Variant
AT00098	Side & Back Shoulder Appliques	All Variant
AT00096	Wheel Arch Cladding	All Variant
AT00165	Piano Black Taillamp Appliques	All Variant



# Intense Chrome Kit

Front Marker Lamp Appliques

Door Handle Chrome Applique

Door Handle Chrome Applique



Head lamp Chrome Applique

ORVM Chrome Applique

Fog lamp Chrome Applique

### Intense Chrome Kit Content as below

Front Fog Lamp Chrome Set - Thar

Chrome Front Marker Lamp Appliques

Rear Reflector Chrome Set - Thar

Door Handle Chrome Set - Thar

Chrome Headlamp Appliques

Chrome Mirror Appliques

Chrome Taillamp Appliques

Rear Reflector Chrome

Chrome Taillamp Appliques

PART NUMBER	PART DESCRIPTION	Applicability
AT00223	Intense Chrome Kit	All Variant

# Intense Chrome Kit



## 1. Features

- High quality Automotive ABS Grade chrome plated Appliques give classy look to your vehicle
- Offers highest level of dimensional accuracy
- Perfectly matches the contours of vehicle Profile & improves aesthetic look of your vehicle

## 2. Advantages

- Abrasion Resistant material improves the life of accessories
- Chrome plating protects accessories from Corrosion in different environment conditions

## 3. Benefits

- Chrome plating improves look of your vehicle & gives long lasting life
- Easy to install with Superior adhesive double sided tape
- Easy to clean & maintain

## 4. Technical Specification

- Automotive ABS Grade Material
- Mounted with 3M PT1100 double sided tape
- OE Grade Chrome Plating

**PART NUMBER**

**PART DESCRIPTION**

**Applicability**

AT00223

Intense Chrome Kit

All Variant

Front Grill Chrome



## 1. Features

- Made up of High-quality Automotive ABS Grade material which gives high flexible strength
- Offers highest level of dimension accuracy
- Designed as per vehicle contour & Style to complete your vehicle

## 2. Advantages

- Classy Design enhance look of the vehicle
- Light weight & long-lasting life
- Easy to clean

## 3. Benefits

- Perfectly matching vehicle profile
- Easy to fit on double sided tape
- Gives protection to Grill.

## 4. Technical Specification

- Automotive ABS Grade Material
- Mounted with GT7108 double sided tape
- Designed & Validated accessories

PART NUMBER	PART DESCRIPTION	Applicability
AT00249	Front Grill Chrome Applique – Thar	All Variant



## 1. Features

- High quality Automotive ABS Grade Piano Black Painted Head lamp Applique give classy look to your vehicle
- Offers highest level of dimension accuracy
- Perfectly matches the contours of vehicle Profile & improves aesthetic look of your vehicle

## 2. Advantages

- Abrasion Resistant material improves the life of accessories
- Chrome plating protects accessories from Corrosion in different environment conditions

## 3. Benefits

- Chrome plating improves look of your vehicle & gives long lasting life
- Easy to install with Superior adhesive double sided tape
- Easy to clean & maintain

## 4. Technical Specification

- Automotive ABS Grade Material
- Mounted with 3M PT1100 double sided tape

Note – Not Applicable with Front Grill Cladding (AT00095)



PART NUMBER	PART DESCRIPTION	Applicability
AT00173	Piano Black Headlamp Appliques	All Variant

# Chrome - Head Lamp Applique



## 1. Features

- High quality Automotive ABS Grade chrome plated Head lamp Applique give classy look to your vehicle
- Offers highest level of dimension accuracy
- Perfectly matches the contours of vehicle Profile & improves aesthetic look of your vehicle

## 2. Advantages

- Abrasion Resistant material improves the life of accessories
- Chrome plating protects accessories from Corrosion in different environment conditions

## 3. Benefits

- Chrome plating improves look of your vehicle & gives long lasting life
- Easy to install with Superior adhesive double sided tape
- Easy to clean & maintain

## 4. Technical Specification

- Automotive ABS Grade Material
- Mounted with 3M PT1100 double sided tape
- OE Standard Chrome Plating

Note – Not Applicable with Front Grill Cladding (AT00095)

PART NUMBER	PART DESCRIPTION	Applicability
AT00172	Chrome Head Lamp Applique	All Variant

## 1. Features

- High quality Automotive PP Grade chrome insert Rain Visor avoid water entry during rain season
- Offers highest level of dimension accuracy
- Perfectly matches the contours of vehicle Profile & gives aesthetic look of your vehicle

## 2. Advantages

- Abrasion Resistant material improves the life of accessories
- Maintain driver viewing angle as per standard, which gives comfort to driver during vehicle running

## 3. Benefits

- Allows the windows of the car to be kept open in the event of light rain so that you can enjoy the rains
- Ensure that the car wind shield do not fog up due to humidity
- Easy to install with Superior adhesive double sided tape
- Easy to clean & maintain

## 4. Technical Specification

- Automotive ABS Grade Material
- Mounted with 3M PT1100 double sided tape



PART NUMBER	PART DESCRIPTION	Applicability
AT00082	Rain Visor With Chrome Insert	All Variant

# Bug Deflector

Front Bug Deflector



## 1. Features

- Made up of High-quality Automotive PP Grade material which gives high flexible strength
- Offers highest level of dimension accuracy
- Designed as per vehicle contour & Style to complete your vehicle

## 2. Advantages

- Classy Design gives stylish look to the vehicle
- Light weight & long-lasting life

## 3. Benefits

- Perfectly matching vehicle profile
- Easy to fit on double sided tape

## 4. Technical Specification

- Automotive PP Grade Material
- Mounted with 3M PT1100 double sided tape
- Designed & Validated accessories

PART NUMBER	PART DESCRIPTION	Applicability
AT00092	Bug Deflector	All Variant



# Side Door Cladding



## 1. Features

- Made up of High-quality Automotive PP Grade material which gives high flexible strength
- Offers highest level of dimension accuracy
- Designed as per vehicle contour & Style to complete your vehicle

## 2. Advantages

- Classy Design gives stylish look to the vehicle
- Light weight & long-lasting life

## 3. Benefits

- Perfectly matching vehicle profile
- Easy to fit on double sided tape

## 4. Technical Specification

- Automotive PP Grade Material
- Mounted with 3M PT1100 double sided tape
- Designed & Validated accessories

PART NUMBER	PART DESCRIPTION	Applicability
AT00097	Side Door Cladding	All Variant

Note – Not Applicable with Side Body Decal (AT00162)



## 1. Features

- High quality Automotive PP Grade Side Footstep for easy Entry & Exit to passenger
- Tested & Validated on vehicle
- Perfectly matches with vehicle profile & merged with wheel arches

## 2. Advantages

- Upgrade your lower variants with High variant blow molded footstep
- Texture & Design on parts gives classy look to your vehicle

## 3. Benefits

- Comfortable to aged person for easily step in & Out
- Easy to install with mounting brackets

## 4. Technical Specification

- Automotive PP Grade Material for higher strength
- Tested & validated on vehicle

PART NUMBER	PART DESCRIPTION	Applicability
AT00107	Plastic (Blow Molded) Footstep	AX – Metal Footstep Replacement

## 1. Features

- High quality Automotive Grade material gives long lasting life

## 2. Advantages

- Screen printed body side decal gives greater durability & comfortability than aftermarket decals
- Creative body decal add a personal touch to your vehicle

## 3. Benefits

- Easy to install with Superior adhesive backing
- Easy to clean & maintain

## 4. Technical Specification

- Made from screen printing process
- Available with 1 year Warranty



PART NUMBER	PART DESCRIPTION	Applicability
AT00162	Body Side Decal	All Variant

Note – Not Applicable with Side Door Cladding (AT00097)

## 18 Inch - Alloy Wheel



### 1. Features

- Upgrade your vehicle with OE 18 Inch Alloy wheel to create high variant look

### 2. Benefits

- Certified High-Quality Alloy
- Tested & validated for THAR & ARAI Certified genuine alloy wheel

### 3. Technical Specification

- 18 Inch Alloy Wheel
- Tyre change required
- THAR Branding on Alloy Wheel

PART NUMBER	PART DESCRIPTION	Applicability	Remark
AT00253	OE 18 Inch Alloy Wheel Kit	AX (With Tyre Change)	Alloy Wheel + Hub Cap + Branding Insert Packed in one box
AT00106	18 Inch Alloy Wheel	AX (With Tyre Change)	
AT00101	Thar Branding Insert (Alloy Wheel)	Applicable with AT00106	
AT00078	Hub Cap - Alloy Wheel	Applicable with AT00106	



## 16 Inch – Black - Diamond Cut Alloy Wheel



### 1. Features

- Made up of high-quality aluminum
- Tested & validated for THAR
- Upgrade your THAR with Black diamond cut 16 Inch alloy wheel

### 2. Benefits

- Adds style element to your THAR with 16 Inch alloy wheel
- ARAI Certified

### 3. Technical Specification

- 16 Inch alloy wheel
- No need to change tire

### 4. Applicability: THAR AX Variant

PART NUMBER	PART DESCRIPTION	Applicability
AT00131	16 Inch Black - Diamond Cut Alloy Wheel	AX



### 1. Features

- High quality ABS moulded Silver wheel cover set to add style element to your Thar
- Premium THAR Branding on Wheel Cover Spoke
- Dual Tone effect with Centre Mahindra logo

### 2. Benefits

- Easy for installation & removable with snap on directly to jazz up your OE steel wheel
- Perfectly matches to seamless fit to OE wheel
- Protect the Steel wheel from dust
- Adds the style element to your vehicle

### 3. Technical Specification

- 16 Inch Wheel Cover
- Snap on fitment
- THAR Branding on wheel Cover

PART NUMBER	PART DESCRIPTION	Applicability
AT00077	16 Inch Wheel Cover	AX Variants



## 1. Features

- High quality Canvas Material Spare wheel cover to add style element to your Thar
- Protects your rear mounted spare wheel from the harsh sun, dust, mud and grime.

## 2. Benefits

- The durable canvas is anti-mildew and high lightfast which means no fungus in rains and no color fading under the sun
- The canvas is water repellent and 100% waterproof. The canvas has a traditional texture and feel.
- Easy for installation with a strong elastic string at the mouth ensures a glove like fit on your spare wheel.

## 3. Technical Specification

- 16- & 18-Inch Wheel Cover
- Snap on fitment With Velcro & Elastics

PART NUMBER	PART DESCRIPTION	Applicability
AT00234	Spare Wheel Cover - Explore The Impossible – AX	AX Variants
AT00239	Spare Wheel Cover - Explore The Impossible – LX	LX Variants





## 1. Features

- High quality Canvas Material Spare wheel cover to add style element to your Thar
- Protects your rear mounted spare wheel from the harsh sun, dust, mud and grime.

## 2. Benefits

- The durable canvas is anti-mildew and high lightfast which means no fungus in rains and no color fading under the sun
- The canvas is water repellent and 100% waterproof. The canvas has a traditional texture and feel.
- Easy for installation with a strong elastic string at the mouth ensures a glove like fit on your spare wheel.

## 3. Technical Specification

- 16- & 18-Inch Wheel Cover
- Snap on fitment With Velcro & Elastics

PART NUMBER	PART DESCRIPTION	Applicability
AT00235	Spare Wheel Cover - Don't Follow Me – AX	AX Variants
AT00240	Spare Wheel Cover - Don't Follow Me – LX	LX Variants





## 1. Features

- High quality Canvas Material Spare wheel cover to add style element to your Thar
- Protects your rear mounted spare wheel from the harsh sun, dust, mud and grime.

## 2. Benefits

- The durable canvas is anti-mildew and high lightfast which means no fungus in rains and no color fading under the sun
- The canvas is water repellent and 100% waterproof. The canvas has a traditional texture and feel.
- Easy for installation with a strong elastic string at the mouth ensures a glove like fit on your spare wheel.

## 3. Technical Specification

- 16- & 18-Inch Wheel Cover
- Snap on fitment With Velcro & Elastics

PART NUMBER	PART DESCRIPTION	Applicability
AT00243	Spare Wheel Cover – Go Get Dirty – AX	AX Variants
AT00241	Spare Wheel Cover – Go Get Dirty – LX	LX Variants



## 1. Features

- High quality Canvas Material Spare wheel cover to add style element to your Thar
- Protects your rear mounted spare wheel from the harsh sun, dust, mud and grime.

## 2. Benefits

- The durable canvas is anti-mildew and high lightfast which means no fungus in rains and no color fading under the sun
- The canvas is water repellent and 100% waterproof. The canvas has a traditional texture and feel.
- Easy for installation with a strong elastic string at the mouth ensures a glove like fit on your spare wheel.

## 3. Technical Specification

- 16- & 18-Inch Wheel Cover
- Snap on fitment With Velcro & Elastics

PART NUMBER	PART DESCRIPTION	Applicability
AT00244	Spare Wheel Cover – Let's Get Lost - AX	AX Variants
AT00242	Spare Wheel Cover – Let's Get Lost - LX	LX Variants



## Spare Wheel Cover – Moulded



### 1. Features

- High quality TPE Material Spare wheel cover to add style element to your Thar
- Protects your rear mounted spare wheel from the harsh sun, dust, mud and grime.

### 2. Benefits

- The durable TPE is anti-mildew and high lightfast which means no fungus in rains and no color fading under the sun
- The TPE is water repellent and 100% waterproof. It has a traditional texture and feel.
- Easy for installation with a strong elastic string at the mouth ensures a glove like fit on your spare wheel.

### 3. Technical Specification

- 16- & 18-Inch Wheel Cover
- Snap on fitment With Velcro & Elastics

PART NUMBER	PART DESCRIPTION	Applicability
AT00251	Spare Wheel Cover - Moulded – Thar	All Variant

# Copper - Painted Interior Trim Kit



## 1. Features

- Upgrade your Thar with Interior painted applique kit
- Create thematic interior with painted applique matching with exterior vehicle copper colour

## 2. Advantages

- Gives aesthetic & stylish look to your vehicle interior
- Matching with exterior vehicle colour
- High Quality paint finish as per OE Standard

## 3. Benefits

- Easy to fit & remove with snap on part
- OE Standard paint finish

## 4. Technical Specification

- Snap on parts replaces original parts

### Kit Content –

- Outer AC Vent (Silver) – 4 Nos
- Inner AC Vent (Copper) – 4 Nos
- THAR Branding Bezel (Copper) – 2 Nos
- Vertical Accents (Copper) – 2 Nos
- Gear Shifter Bezel (Copper) – 1 Nos
- Cup Holder Bezel (Copper) – 1 Nos

PART NUMBER	PART DESCRIPTION	Applicability
AT00232	Copper Painted Interior Trim Kit	All Variant

Note – Product color may differ from the rendered Photograph



# Olive Green - Painted Interior Trim Kit



## 1. Features

- Upgrade your Thar with Interior painted applique kit
- Create thematic interior with painted applique matching with interior Seat Cover & Floor Mat theme

## 2. Advantages

- Gives aesthetic & stylish look to your vehicle interior
- Matching with interior accessories (Seat Cover)
- High Quality paint finish as per OE Standard

## 3. Benefits

- Easy to fit & remove with snap on part
- OE Standard paint finish

## 4. Technical Specification

- Snap on parts replaces original parts

## Kit Content –

- Inner AC Vent – 4 Nos
- Gear Shifter Bezel – 1 Nos
- Cup Holder Bezel – 1 Nos

PART NUMBER	PART DESCRIPTION	Applicability
AT00233	Olive Green Painted Interior Trim Kit	All Variant

Note – Product color may differ from the rendered Photograph

## **Comfort & Convenience Accessories**

# Black-Red - Perforated Camouflage Seat Cover



Camouflaged Perforation Pattern

## 1. Features

- Premium theme Camouflaged perforated seat cover to create premium interior for your Thar
- All Weather bacteria resistant seat cover gives long lasting life
- High Foam thickness gives more comfort while driving vehicle

## 2. Advantages

- Certified High-Quality dry feel PU Material giving more premium look of your vehicle interior
- Perfectly matches with the original seat's profiles with bucket fitting

## 3. Benefits

- Protects your original seats from the UV beams of sun that will cause the color & grain fading
- protect the seats from stains due to liquid spillage or dust deposition
- All weather bacteria resistant seat cover
- Dustproof & odor free material
- Easy to clean & maintain

## 4. Technical Specification

- Tested & validated Vinyl material
- OE Grade Vinyl

PART NUMBER	PART DESCRIPTION	Applicability
AT00110	Black-Red - Perforated Camouflage Seat Cover	LX & AX (OPT) - 4S
AT00111	Black-Red - Perforated Camouflage Seat Cover	AX AC – 6S

# Black Vinyl With Red Insert - Seat Cover



## 1. Features

- Premium theme Black Vinyl with Red Insert Seat cover to create premium interior for your Thar
- All Weather bacteria resistant seat cover gives long lasting life
- High Foam thickness gives more comfort while driving vehicle

## 2. Advantages

- Certified High-Quality dry feel PU Material gives more premium look of your vehicle interior
- Perfectly matches with the original seat's profiles with bucket fitting

## 3. Benefits

- Protects your original seats from the UV beams of sun that will cause the color & grain fade
- protect the seats from stains due to liquid spillage or dust deposition
- All weather bacteria resistant seat cover
- Dustproof & odor free material
- Easy to clean & maintain

## 4. Technical Specification

- Tested & validated Vinyl material
- OE Grade Vinyl

PART NUMBER	PART DESCRIPTION	Applicability
AT00112	Black Vinyl With Red Insert - Seat Cover	LX & AX (OPT) – 4S
AT00113	Black Vinyl With Red Insert - Seat Cover	AX AC – 6S



# Black Vinyl With Red Strip - Seat Cover



## 1. Features

- Premium theme Black Vinyl with Red Strip seat cover to create premium interior for your Thar
- All Weather bacteria resistant seat cover gives long lasting life
- High Foam thickness gives more comfort while driving vehicle

## 2. Advantages

- Certified High-Quality dry feel PU Material gives more premium look of your vehicle interior
- Perfectly matches with the original seat's profiles with bucket fitting

## 3. Benefits

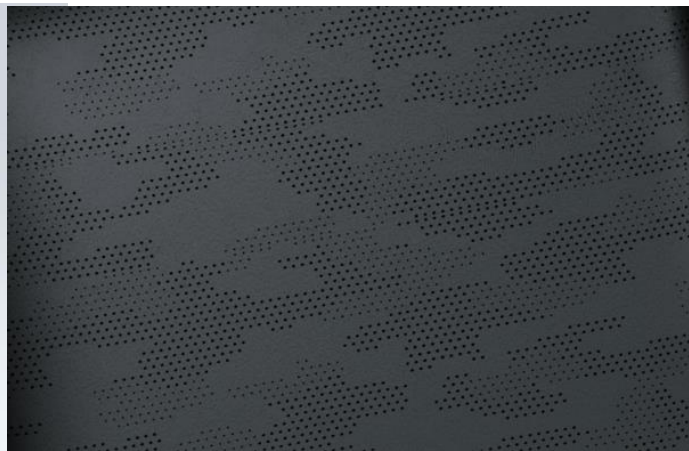
- Protects your original seats from the UV beams of sun that will cause the color & grain fade
- protect the seats from stains due to liquid spillage or dust deposition
- All weather bacteria resistant seat cover
- Waterproof, Dustproof & odor free material
- Easy to clean & maintain

## 4. Technical Specification

- Tested & validated Vinyl material
- OE Grade Vinyl

PART NUMBER	PART DESCRIPTION	Applicability
AT00116	Black Vinyl With Red Strip - Seat Cover	LX & AX (OPT) – 4S
AT00117	Black Vinyl With Red Strip - Seat Cover	AX AC – 6S

# Olive - Perforated Camouflage Seat Cover



Camouflaged Perforation Pattern

## 1. Features

- Premium theme Camouflaged perforated Olive seat cover to create premium interior of your Thar
- All Weather bacteria resistant seat cover gives long lasting life
- High Foam thickness gives more comfortable while driving vehicle

## 2. Advantages

- Certified High-Quality dry feel PU Material gives more premium look of your vehicle interior
- Perfectly matches with the original seat's profiles with bucket fitting

## 3. Benefits

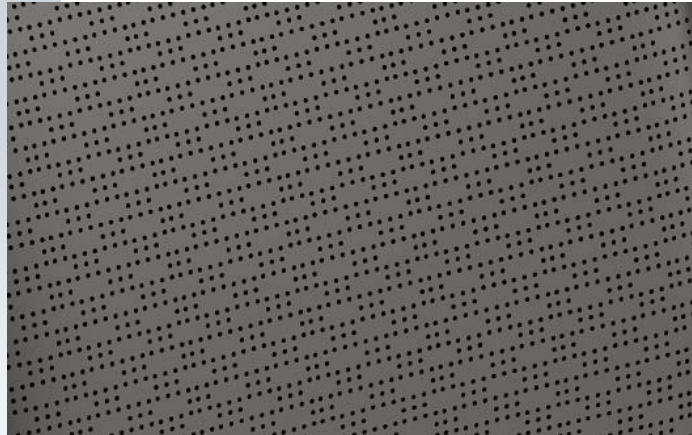
- Protects your original seats from the UV beams of sun that will cause the color & grain fade
- protect the seats from stains due to liquid spillage or dust deposition
- All weather bacteria resistant seat cover
- Dustproof & odor free material
- Easy to clean & maintain

## 4. Technical Specification

- Tested & validated Vinyl material
- OE Grade Vinyl

PART NUMBER	PART DESCRIPTION	Applicability
AT00118	Olive - Perforated Camouflage Seat Cover	LX & AX (OPT) – 4S

# Brown – Custom Square Perforated Seat Cover



Square Perforation Pattern

## 1. Features

- Premium theme Brown Custom Square Perforated seat cover to create premium interior of your Thar
- All Weather bacteria resistant seat cover gives long lasting life
- High Foam thickness gives more comfortable while driving vehicle

## 2. Advantages

- Certified High-Quality dry feel PU Material gives more premium look of your vehicle interior
- Perfectly matches with the original seat's profiles with bucket fitting

## 3. Benefits

- Protects your original seats from the UV beams of sun that will cause the color & grain fade
- protect the seats from stains due to liquid spillage or dust deposition
- All weather bacteria resistant seat cover
- Dustproof & odor free material
- Easy to clean & maintain

## 4. Technical Specification

- Tested & validated Vinyl material
- OE Grade Vinyl

PART NUMBER	PART DESCRIPTION	Applicability
AT00120	Brown – Custom Square Perforated Seat Cover	LX & AX (OPT) – 4S
AT00121	Brown – Custom Square Perforated Seat Cover	AX AC – 6S



## 1. Features

- Premium theme Printed Camouflaged - Seat Cover to create off-raoding effects in interior of your vehicle
- All Weather bacteria resistant seat cover gives long lasting life
- High Foam thickness gives more comfortable while driving vehicle

## 2. Advantages

- Certified High-Quality dry feel PU Material gives more premium look of your vehicle interior
- Perfectly matches with the original seat's profiles with bucket fitting

## 3. Benefits

- Protects your original seats from the UV beams of sun that will cause the color & grain fade
- protect the seats from stains due to liquid spillage or dust deposition
- All weather bacteria resistant seat cover
- Dustproof & odor free material
- Easy to clean & maintain

## 4. Technical Specification

- Tested & validated Vinyl material
- OE Grade Vinyl

PART NUMBER	PART DESCRIPTION	Applicability
AT00122	Printed Camouflaged - Seat Cover	LX & AX (OPT) – 4S
AT00123	Printed Camouflaged - Seat Cover	AX AC – 6S



## Canvas Seat Cover - Seat Cover



### 1. Features

- High quality Canvas material Seat cover to protect original seats during off-roading

### 2. Advantages

- Certified High-Quality material gives more premium look to your vehicle interior with THAR Branding on seat cover
- Perfectly matches with the original seat's profiles

### 3. Benefits

- The durable canvas is anti-mildew and high lightfast which means no fungus in rains and no color fading
- The canvas is water repellent and 100% waterproof. The canvas has a traditional texture and feel.
- Easy to remove & install with a strong elastic string & Velcro.
- Dustproof & odor free material
- Easy to clean & maintain

### 4. Technical Specification

- Material – Canvas
- Color – Dark Grey

PART NUMBER	PART DESCRIPTION	Applicability
AT00238	Canvas (Dark Grey) Seat Cover Set (4S)	LX & AX (OPT) – 4S



## 1. Features

- Upgrade your vehicle with Premium material Steering cover matching with seat cover to create premium interior of your vehicle
- All Weather bacteria resistant material gives long lasting life & comfort during driving

## 2. Advantages

- Certified High-Quality dry feel PU Material gives more premium look of your vehicle interior
- Perfectly matches with the original interior seat covers
- Perfectly formed & contoured to OE steering & fits like OE steering cover

## 3. Benefits

- Gives Comfort during vehicle driving & Offers a smooth yet grips with perforations
- All weather bacteria resistant material
- Dustproof & odor free material
- Easy to clean & maintain

PART NUMBER	PART DESCRIPTION	Applicability
AT00130	Steering Wheel Cover (Vinyl)	All Variant

# Designer Floor Mat Set



Rendered Image

## 1. Features

- Heavy duty PVC moulded designer mat matching with interior of your vehicle
- All Weather bacteria resistant mat gives long lasting life

## 2. Advantages

- Certified High-Quality PVC Material gives more premium look of your vehicle interior
- Perfectly matches with the vehicle floor with Locking eylet for driver mat to ensure passenger safety

## 3. Benefits

- Protects your original vehicle floor from dirt, wear & salt corrosion
- All weather Floor mats can be easily removed & replaces by cleaning
- Specially designed driver side designer mat to avoid fouling with ABC during riding & Perfectly matches full floor of the vehicle
- Designer mats has considered safety systems for example an anti-slip bottom side and a heel pad for added safety and wear

## 4. Technical Specification

- Heavy Duty Mat with 7 mm Thickness
- THAR Branding

Note – Product color may differ from the rendered Photograph

Actual Product Image

PART NUMBER	PART DESCRIPTION	Applicability
AT00069	Designer Floor Mat Set	LX & AX (OPT) – 4S
AT00073	Designer Floor Mat Set	AX AC – 6S



# Camouflage - Printed Carpet Mat Set



## 1. Features

- High GSM Camouflaged Printed mat matching with interior of your vehicle
- All Weather bacteria resistant mat gives long lasting life

## 2. Advantages

- Certified High-Quality carpet material gives more premium look of your vehicle interior
- Perfectly matches with the vehicle floor with Locking eylet for driver mat to ensure passenger safety

## 3. Benefits

- Protects your original vehicle floor from dirt, wear & salt corrosion
- All weather Floor mats can be easily removed & replaces by cleaning
- Specially designed driver side designer mat to avoid fouling with ABC during riding & Perfectly matches full floor of the vehicle
- Designer mats has considered safety systems for example an anti-slip bottom side and a heel pad for added safety and wear

## 4. Technical Specification

- High GSM (700)
- THAR Branding

Note – Product color may differ from the rendered Photograph



Rendered Image

Actual Product Image

PART NUMBER	PART DESCRIPTION	Applicability
AT00070	Camouflage - Printed Carpet Mat Set	LX & AX (OPT) – 4S
AT00074	Camouflage - Printed Carpet Mat Set	AX AC – 6S



## Grey - Carpet Mat Set



Rendered Image



Actual Product Image

### 1. Features

- High GSM Carpet mat matching with interior of your vehicle
- All Weather bacteria resistant mat gives long lasting life

### 2. Advantages

- Certified High-Quality carpet material gives more premium look of your vehicle interior
- Perfectly matches with the vehicle floor with Locking eylet for driver mat to ensure passenger safety

### 3. Benefits

- Protects your original vehicle floor from dirt, wear & salt corrosion
- All weather Floor mats can be easily removed & replaces by cleaning
- Specially designed driver side designer mat to avoid fouling with ABC during riding & Perfectly matches full floor of the vehicle
- Designer mats has considered safety systems for example an anti-slip bottom side and a heel pad for added safety and wear

### 4. Technical Specification

- High GSM (700)
- THAR Branding

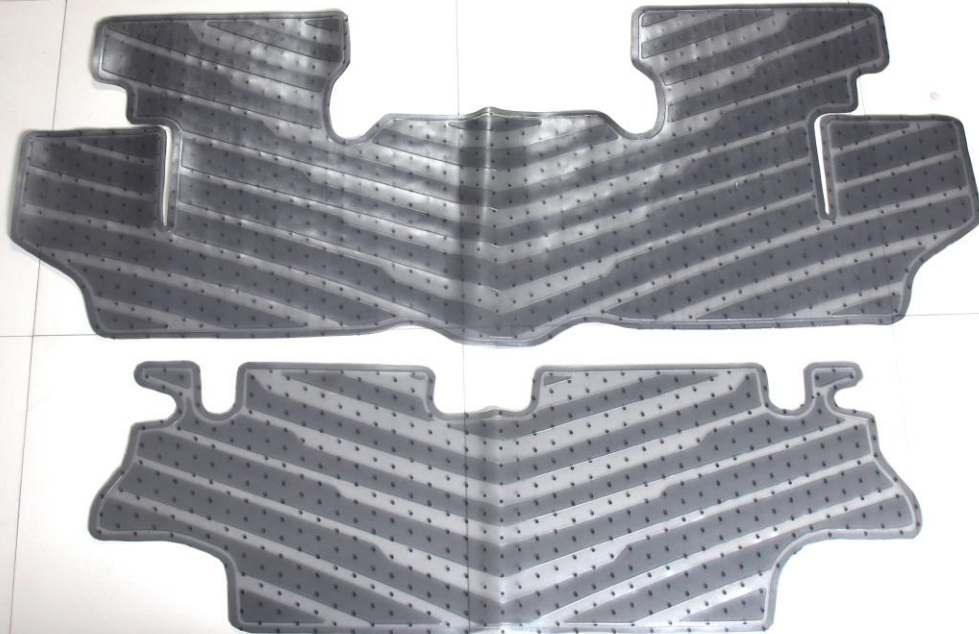
Note – Product color may differ from the rendered Photograph

PART NUMBER	PART DESCRIPTION	Applicability
AT00071	Grey - Printed Carpet Mat Set	LX & AX (OPT) – 4S
AT00075	Grey - Printed Carpet Mat Set	AX AC – 6S

# Smoke Grey - Vinyl Mat Set



Rendered Image



Actual Product Image

## 1. Features

- High GSM Carpet mat matching with interior of your vehicle
- All Weather bacteria resistant mat gives long lasting life

## 2. Advantages

- Certified High-Quality carpet material gives more premium look of your vehicle interior
- Perfectly matches with the vehicle floor with Locking eylet for driver mat to ensure passenger safety

## 3. Benefits

- Protects your original vehicle floor from dirt, wear & salt corrosion
- All weather Floor mats can be easily removed & replaces by cleaning
- Specially designed driver side designer mat to avoid fouling with ABC during riding & Perfectly matches full floor of the vehicle
- Designer mats has considered safety systems for example an anti-slip bottom side and a heel pad for added safety and wear

## 4. Technical Specification

- Heavy Duty Mat
- THAR Branding

Note – Product color may differ from the rendered Photograph

PART NUMBER	PART DESCRIPTION	Applicability
AT00072	Smoke Grey - Vinyl Mat Set	LX & AX (OPT) – 4S
AT00076	Smoke Grey - Vinyl Mat Set	AX AC – 6S



Reference Image

## 1. Features

- All Weather bacteria resistant Full Floor Lamination Mat to protect original floor of your vehicle

## 2. Advantages

- Certified High-Quality material gives long lasting life
- Specially designed 100% waterproof material
- Protect a vehicle's floor from dirt, wear and salt corrosion

## 3. Benefits

- Specially designed driver side mat to avoid fouling with ABC during riding & Perfectly matches full floor of the vehicle
- Designer mats has considered safety systems for example an anti-slip bottom side and a heel pad for added safety and wear

## 4. Technical Specification

- Covers the Full vehicle Floor
- Laminated with Male-Female Velcro

PART NUMBER	PART DESCRIPTION	Applicability
AT00100	Full Floor Lamination Mat	AX AC -6S





## 1. Features

- High quality Polyester material magnetic sunshade
- Protect your passengers and upholstery from excess light and heat

## 2. Benefits

- Made with a precise accuracy with exact size for all windows with ORVM viewing cut out on driver & Co-driver side
- Magnates on the edges keep the shades securely in place even when the window is down on high speeds keep out the suns UV rays
- Easy for installation & removable

## 3. Technical Specification

- Stick on magnet
- Available with 1 year warranty

PART NUMBER	PART DESCRIPTION	Applicability
AT00124	Magnetic Sunshades Set	All Variant



## 1. Features

- High quality Polyester material magnetic sunshade
- Protect your passengers and upholstery from excess light and heat

## 2. Benefits

- Made with a precise accuracy with exact size for both the windows at 2<sup>nd</sup> row,
- Clips on edges keep the shades securely in place even when the vehicle is at high speeds keep out the suns UV rays
- Easy for installation & removable

## 3. Technical Specification

- Stick on magnet
- Available with 1 year warranty

PART NUMBER	PART DESCRIPTION	Applicability
AT00250	2nd Row Sun Shade Set - Thar	All Variant

# Front Wind Shield Sunshade



Note-Reference image

## 1. Features

- 60% Radiant heat barrier
- 88% UV resistant
- Fire radiant
- Eco Friendly

## 2. Advantages

- Protects vehicle dashboard from heating due to direct sun light , while vehicle in open parking area & keeps overall temp low inside vehicle.

## 3. Benefits

- Easy to remove & install

## 4. Applicability : As per below table

Part Number	Part Description	Thar	Bolero
AT00252	Front Wind Shield Sun Shade - Thar, Bolero	Yes	Yes



# Canvas Driver Seat Back Organizer



## 1. Features

- Heavy duty waterproof Canvas seat organizer to keep your essential items at place
- Durable & Long-lasting material

## 2. Benefits

- Multi pockets seat organizer for storage of essential item during traveling
- Reduces clutter in vehicle during travelling
- Space saving accessory
- Premium Mahindra branding
- Easy for installation & removable

## 3. Technical Specification

- Material – Heavy duty canvas

PART NUMBER	PART DESCRIPTION	Applicability
AT00236	Canvas Driver Seat Back Organizer	All Variant

# Canvas 2nd Row Seat Back Organizer



## 1. Features

- Heavy duty waterproof Canvas seat organizer to keep your essential items at place
- Durable & Long-lasting material

## 2. Benefits

- Multi pockets seat organizer for storage of essential item during traveling
- Reduces clutter in vehicle during travelling
- Space saving accessory
- Premium Mahindra branding
- Easy for installation & removable

## 3. Technical Specification

- Material – Heavy duty canvas

PART NUMBER	PART DESCRIPTION	Applicability
AT00237	Canvas 2nd Row Seat Back Organizer	LX & AX opt (4-Seater)

# Tail Gate Mounted Snack Tray



## Snack Tray:

- THAR Branded Folding Snack Tray.
- Constructed from solid Metal and powder coated for protection
- Convenient table that folds down from the tailgate.
- Whether you are doing a trail repair or just making lunch, this table just makes life easier
- Fold up design makes storage convenient
- Can hold up to 7 to 8 kg load
- Bolts to mounting points
- Rattle free design

PART NUMBER	PART DESCRIPTION	Applicability
AT00125	Tail Gate Mounted Snack Tray	All Variant



# Technology Accessories

## 2 Din Head Unit Mounting Kit



### 1. Features

- Upgrade your THAR with 2 Din Head Unit with the prepacked mounting kit (Bracket + Bezel)
- Add the Reverse Camera feature with display in Head Unit

### 2. Advantages

- Adds style to your vehicle same as high variant
- Easy for fitment with mounting brackets & Bezel, No drilling required

### 3. Benefits

- Upgrade base variant to High variant feature
- OE look a like fitment
- No Drilling required
- Vehicle Warranty remain same

#### Kit Part No

PART NUMBER	PART DESCRIPTION	Applicability
AT00231	2 Din Head Unit Mounting Kit	AX Variant

#### Child Part – Part No

PART NUMBER	PART DESCRIPTION	Applicability
AT00169	2Din Infotainment Head Units (Bezel)	AX Variant
AT00132	2 Din Head Unit Mounting Bracket	AX Variant



Speaker

Speaker

## 1. Features

- Upgrade your THAR lower variants with dashboard mounted
- Enjoy the music in your vehicle like home theater

## 2. Advantages

- Adds style to your vehicle
- Easy for fitment with mounting brackets & screws, No drilling required

## 3. Benefits

- Upgrade base variant to High variant feature
- No Drilling required
- Vehicle Warranty remain same

## 4. Technical Specification

- Tried & Tested for Thar

PART NUMBER	PART DESCRIPTION	Applicability
AT00133	Dashboard Speaker Mounting Bracket	AX Variant





## 1. Features

- Upgrade your THAR with Rear View Camera Kit & avoid the accident during vehicle parking
- Add the safety feature to your vehicle

## 2. Advantages

- Vehicle rear view camera
- Color CCD/CMOS camera system
- Compact size & easy installation

## 3. Benefits

- Integrates with OEM infotainment system
- Wide view angle with low light compensation
- Applicable for LX variant

PART NUMBER	PART DESCRIPTION	Applicability
AT00230	Rear View Camera Kit	LX Variant

# Front Parking Sensor



## 1. Features

- Upgrade your THAR with Front parking sensor & avoid the accident during vehicle running & Parking
- Add the safety feature to your vehicle

## 2. Advantages

- Separate display unit with alarm sound
- Color indication to make already before touch the obstacles
- Compact size & easy installation

## 3. Benefits

- Adds the safety feature to your vehicle
- Wide view angle sensor
- Separate display unit with alarm sound
- Separate button to on/off beep sound
- Applicable for all variant

Display Unit



Sensor



Controller

PART NUMBER	PART DESCRIPTION	Applicability
AZ00110	Front Parking Sensor	All Variant

## 1. Features

- Upgrade your THAR with LX Variant Remote lock & ensure your vehicle safety
- OE Remote key for remote operation of central locking in AX Variant

## 2. Advantages

- No Wiring, No drilling & physical installation required
- Easy to Upgrade LX variant feature by software activation & key learning

## 3. Benefits

- Upgrade base variant to High variant feature
- Option of single or double remote pairing as per customer preference
- Vehicle Warranty remain same

## 4. Technical Specification

- Tried & Tested for Thar
- Validated by R&D



PART NUMBER	PART DESCRIPTION	Applicability
AT00105	OE Remote Lock Key	AX AC



## Vibe Component & Coaxial Speakers

Component Speaker (6")



Coaxial Speaker (6")



Component Speaker (5")



Coaxial Speaker (5")

### 1. Features

- Upgrade your THAR with Vibe Branded Speaker
- Enjoy the high-quality music in your vehicle like home theater effect

### 2. Advantages

- Improve the style of Sound
- Easy for fitment with Plug & Play Provision
- No Drilling required

### 3. Benefits

- Upgrade your Thar With Best quality branded Vibe Speaker
- Plug & Play Fitment
- Vehicle Warranty remain same

### 4. Technical Specification

- Tried & Tested for Thar

Configuration	2-way
Speaker Size	6.5" (165mm)
Peak/RMS Power	240W/80W
Sensitivity	94dB
Frequency Response	54Hz - 25kHz
Impedance	4Ω
Mounting Depth	2.4" (61mm)
Mounting Diameter	5.6" (142mm)
Grill Included	Yes
Recommended Amp	POWERBOX60.2-V7

PART NUMBER	PART DESCRIPTION	Applicability
AS00164	Vibe Component Speaker Set - 5 Inch	LX – Dashboard & Roof Mounted, AX Opt – Only Roof Mounted
AS00165	Vibe Coaxial Speaker Set – 5 Inch	LX – Dashboard & Roof Mounted, AX Opt – Only Roof Mounted
AC00679	Vibe Component Speaker Set – 6 Inch	Applicable only for AX Opt Variant on Dashboard
AC00680	Vibe Coaxial Speaker Set – 6 Inch	Applicable only for AX Opt Variant on Dashboard
AS00173	Wiring Kit for Speaker	All Variant

Amplifier (65.4M-V7)



Note – All 3 Part no required for Amplifier fitment

## 1. Features

- Upgrade your THAR with Vibe Branded Sound upgrade Amplifier & Subwoofer
- Enjoy the high-quality music in your vehicle like home theater effect

## 2. Advantages

- Improve the style of Sound
- Easy for fitment with Plug & Play Provision
- No Drilling required

## 3. Benefits

- Upgrade your Thar With Best quality branded Vibe Amplifier & Subwoofer
- Plug & Play Fitment
- Vehicle Warranty remain same

## 4. Technical Specification

- Tried & Tested for Thar

PART NUMBER	PART DESCRIPTION	Applicability
AS00166	Vibe Mini 4 Channel Amplifier	All Variant
AS00171	Critical Link 10G Amplifier Kit	All Variant
AT00222	Thar/Marazzo Wiring Kit	All Variant

# Amplifier - Vibe Power Box 60.4- V9



## 1. Features

- Upgrade your vehicle with Vibe (UK Branded) amplifier & feel theatre effect in vehicle
- The new Vibe Power box amplifier range is designed to be able to offer a Vibe amplifier to power and speaker, subwoofer
- 4 Channel Stereo Amplifier
- Bridgeable Channels at 4 Ohm

## 2. Advantages

- Class AB Extruded aluminum heatsink provides superior heat dissipation and thermal performance.
- High level input with Autosense circuit allows the amplifier to turn on and off

## 3. Technical Specifications

- 4 X 60 W@ 4 ohm
- Maximum Power 640 W
- Dimensions (H X W X D) – 2”X9”X7.6”
- RMS @ 2Ω Stereo – 4 x 80 watts
- RMS @ 4Ω Mono – 2 x 160 watts
- Frequency Response – 20Hz – 20kHz

PART NUMBER	PART DESCRIPTION	Applicability
AT00256	Amplifier - Vibe Power Box 60.4- V9	Universal to all Mahindra vehicles
AS00171	Critical Link 10G Amplifier Kit	All Variant
AT00222	Thar/Marazzo Wiring Kit	All Variant



## Under Seat Active Subwoofer – Vibe Pulse C8A-V0



### 1. Features

- Upgrade your vehicle with Vibe (UK Branded) amplifier & feel theatre effect in vehicle
- The new Vibe Power box amplifier range is designed to be able to offer a Vibe amplifier to power and speaker, subwoofer
- 4 Channel Stereo Amplifier
- Bridgeable Channels at 4 Ohm

### 2. Advantages

- Class AB Extruded aluminum heatsink provides superior heat dissipation and thermal performance.
- High level input with Autosense circuit allows the amplifier to turn on and off

### 3. Technical Specifications

- 4 X 60 W@ 4 ohm
- Maximum Power 640 W
- Dimensions (H X W X D) – 2”X9”X7.6”
- RMS @ 2Ω Stereo – 4 x 80 watts
- RMS @ 4Ω Mono – 2 x 160 watts
- Frequency Response – 20Hz – 20kHz

### Feasible Location to Fix in Vehicle –

- Thar - Driver/Co-Driver or in Boot

PART NUMBER	PART DESCRIPTION	Applicability
AT00257	Under Seat Active Subwoofer -Vibe Pulse C8A-V0	Universal to all Mahindra vehicles
AS00171	Critical Link 10G Amplifier Kit	All Variant
AT00222	Thar/Marazzo Wiring Kit	All Variant

## Vibe Amplifier & Subwoofer

Amplifier (400.1M-V7)



Configuration	Monoblock
Dimensions (H x W x D)	1.5" x 6.2" x 3.2" (37mm x 157mm x 82mm)
RMS @ 4Ω Mono	170 watts
RMS @ 2Ω Mono	250 watts
RMS @ 1Ω Mono	400 watts
Maximum Power	800 watts
Frequency Response	10Hz - 500Hz
Crossover Type	LP / Subsonic
Crossover Range	30Hz - 150Hz
Topology	Class D

Subwoofer (T12S-V6)



Subwoofer (P8-V6)



### 1. Features

- Upgrade your THAR with Vibe Branded Sound upgrade Amplifier & Subwoofer
- Enjoy the high-quality music in your vehicle like home theater effect

### 2. Advantages

- Improve the style of Sound
- Easy for fitment with Plug & Play Provision
- No Drilling required

### 3. Benefits

- Upgrade your Thar With Best quality branded Vibe Amplifier & Subwoofer
- Plug & Play Fitment
- Vehicle Warranty remain same

### 4. Technical Specification

- Tried & Tested for Thar

Driver	BLACKAIR 85
Type	Passive bass enclosure
Peak/RMS Power	900W/300W
Impedance	2Ω
Dimensions (H x W x D)	14.2" x 21.1" x 5.2" (361mm x 535mm x 131mm)
Configuration	2nd order passive radiator
Enclosure Type	Ultra Shallow Bass Enclosure
Recommended Amplifier	POWERBOX400.1M-V7
Pack with POWERBOX400.1M-V7	BLACKAIRT12SPACK-V6

Driver	BlackAir 8
Type	Passive enclosure
Peak/RMS Power	1500W/500W
Impedance	Dual 4Ω
Dimensions (H x W x D)	18.8" x 19.9" x 5.9" (477mm x 505mm x 150mm)
Configuration	2nd order passive radiator
Enclosure Type	Compact Bass Enclosure
Recommended Amplifier	POWERBOX500.1-V7
Pack with POWERBOX400.1M-V7	BLACKAIRP8PACK-V6

PART NUMBER	PART DESCRIPTION	Applicability
AS00167	Vibe Mono Amplifier (400.1M-V7)	All Variant
AS00168	Vibe Passive Subwoofer (T12S-V6)	All Variant
AS00169	Vibe Passive Subwoofer (P8-V6)	All Variant
AS00171	Critical Link 10G Amplifier Kit	All Variant
AT00222	Thar/Marazzo Wiring Kit	All Variant

Note – AS00171 & AT00222 is required for Amplifier/Subwoofer fitment



# Thar NVH Reduction Kit

Front Door LH & RH



Rear Door

## 1. Features

- Upgrade your THAR with High Quality material Noise, Vibration & Harshness Reduction Kit
- Reduces the sound level coming from outside environment (e.g. Engine, traffic & other noise)

## 2. Advantages

- Gives comfort to passenger by reducing outside sound disturbances
- No Drilling, Electrical connection required

## 3. Benefits

- Reduces outside sound disturbances coming inside vehicle
- Protects shield form heat

## 4. Technical Specification

- Kit Content -
  - Damping Pads
  - Absorber
  - Microfiber
  - Adhesive Tape
  - Surface cleaner

## 5. Applicability: As per table

PART NUMBER	PART DESCRIPTION	Applicability
AT00248	Thar NVH Reduction kit	All Variant



## **Safety & Security Accessories**

## 1. Features

- Made of high-quality fabric which is durable & light weight
- Breathable fabric to avoid condensation under cover
- Perfectly matches with vehicle profile & Cover Entire vehicle

## 2. Advantages

- Exclusive THAR branding with elastic snaps & buckle for a tight fit
- Breathable fabric to avoid condensation under cover
- UV Resistant, Durable & Eco Friendly

## 3. Benefits

- Protect your vehicle from Dirty bird dropping & damages from Rains
- Easy to install & remove
- Easy to clean & Maintain

## 4. Technical Specification

- High GSM fabric
- 88% UV Resistance
- 70% Water Resistant
- 6% Heat Retardant



PART NUMBER	PART DESCRIPTION	Applicability
AT00085	Full – Camouflage Body Cover	All Variant

## 1. Features

- Made of high-quality fabric which is durable & light weight
- Breathable fabric to avoid condensation under cover
- Perfectly matches with vehicle profile & Cover Entire vehicle

## 2. Advantages

- Exclusive THAR branding with elastic snaps & buckle for a tight fit
- Breathable fabric to avoid condensation under cover
- UV Resistant, Durable & Eco Friendly

## 3. Benefits

- Protect your vehicle from Dirty bird dropping & damages from Rains
- Easy to install & remove
- Easy to clean & Maintain

## 4. Technical Specification

- High GSM fabric
- 88% UV Resistance
- 70% Water Resistant
- 6% Heat Retardant



PART NUMBER	PART DESCRIPTION	Applicability
AT00084	Full - Dual Tone Body Cover	All Variant



## 1. Features

- Made of high-quality fabric which is durable & light weight
- Breathable fabric to avoid condensation under cover
- Perfectly matches with vehicle profile

## 2. Advantages

- Exclusive THAR branding with elastic snaps & buckle for a tight fit
- Breathable fabric to avoid condensation under cover
- UV Resistant, Durable & Eco Friendly

## 3. Benefits

- Protect your vehicle from Dirty bird dropping & damages from Rains
- Easy to install & remove
- Easy to clean & Maintain

## 4. Technical Specification

- High GSM fabric
- 88% UV Resistance
- 70% Water Resistant
- 6% Heat Retardant



PART NUMBER	PART DESCRIPTION	Applicability
AT00087	Half – Camouflage Body Cover	All Variant

## Half – Dual Tone Body Cover

### 1. Features

- Made of high-quality fabric which is durable & light weight
- Breathable fabric to avoid condensation under cover
- Perfectly matches with vehicle profile

### 2. Advantages

- Exclusive THAR branding with elastic snaps & buckle for a tight fit
- Breathable fabric to avoid condensation under cover
- UV Resistant, Durable & Eco Friendly

### 3. Benefits

- Protect your vehicle from Dirty bird dropping & damages from Rains
- Easy to install & remove
- Easy to clean & Maintain

### 4. Technical Specification

- High GSM fabric
- 88% UV Resistance
- 70% Water Resistant
- 6% Heat Retardant



PART NUMBER	PART DESCRIPTION	Applicability
AT00086	Half Dual Tone Body Cover	All Variant



## 1. Features

- SS Scuff Plate made of special automotive stainless steel & comes with the vehicle branding
- Perfectly matches the contours of Door rocker panel with zero gap between parts & gives a premium look to the vehicle

## 2. Benefits

- Certified High-Quality material gives long lasting life
- Door Sill protector enhances the looks of the car & Protects the rocker panel from scratches and damage

## 3. Technical Specification

- Stainless steel material SS-304
- 2 Door Scuff Plate Set
- THAR Branding on Scuff Plate

PART NUMBER	PART DESCRIPTION	Applicability
AT00102	SS Scuff Plate	All Variant



## Front & Rear Mud Flap Set



Front Mud Flap



Rear Mud Flap

### 1. Features

- High quality Automotive PP Grade Mud Flap Set Protects vehicle from Mud during vehicle running
- Offers highest level of dimension accuracy
- Perfectly matches the contours of vehicle Profile & gives aesthetic look of your vehicle

### 2. Benefits

- Abrasion Resistant material improves the life of accessories
- Perfectly matches the contours of vehicle Profile & gives aesthetic look of your vehicle
- Easy to install with Self tapping screw

### 3. Technical Specification

- Automotive PP Grade Material
- Mounted with Self Tapping Screw
- Maintain Ramp Over & Departure Angle as defined for vehicle

PART NUMBER	PART DESCRIPTION	Applicability
AT00246	Front & Rear Mud Flap Set – Thar LX	LX
AT00247	Front & Rear Mud Flap Set - Thar AX	AX

## Radiator Protection Guard Kit

### 1. Features

- High quality Mild Steel Material Radiator Protection Guard to Protect vehicle radiator during off-roading activity
- Offers highest level of dimension accuracy
- Perfectly matches the contours of vehicle Profile & covers full radiator area
- Essential accessory for All New Thar during off-roading

### 2. Advantage

- Designed to deliver great off-roading experience in any terrain while taking care of your vehicle radiator
- help to protect radiator from heady stone or other obstacles hitting during off-roading

### 2. Benefits

- MS powder coated material prevents corrosion issue while long use & improves the life of accessories
- Easy to install with Fasteners provided in kit without any drilling

### 3. Technical Specification

- Mild Steel material
- Thickness – 3 mm



Radiator Protection Guard

PART NUMBER	PART DESCRIPTION	Applicability
AT00245	Radiator Protection Guard Kit	All Variant



# Fuel Tank Protector

## 1. Features

- High quality Automotive PP Material Fuel Tank Protector to Protect vehicle Fuel Tank from Minor Stone/Speed Breaker hitting
- Offers highest level of dimension accuracy
- Perfectly matches the vehicle Fuel Tank Profile & covers full area
- Essential accessory for All New Thar to protect fuel tank

## 2. Advantage

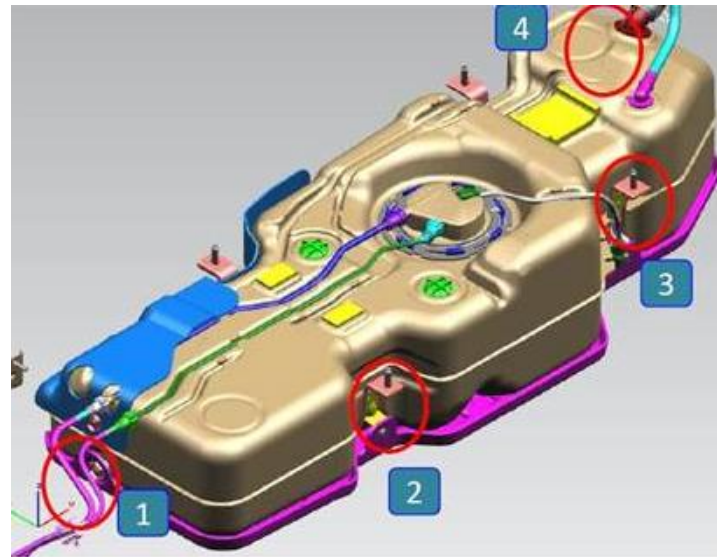
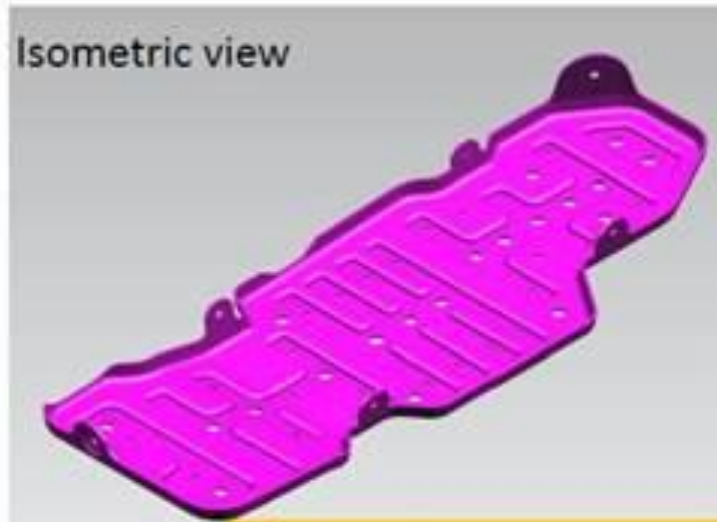
- Designed to deliver great riding experience during vehicle running on Normal roads while taking care of your vehicle fuel tank
- help to protect fuel tank from Minor stone or Speed breaker hitting.

## 2. Benefits

- Special Automotive Grade material with 4 mm Thickness give higher protection & improves the life of vehicle fuel tank.
- Easy to install with Fasteners provided in kit without any drilling

## 3. Technical Specification

- Material - PP Grade
- Thickness – 4 mm



PART NUMBER	PART DESCRIPTION	Applicability
AT00099	Fuel Tank Protector	All Variant



# Thar Air Dam Kit (Funtional)



### 1. Features

- Upgrade your THAR with functional air dam kit to deflect the oncoming air during vehicle running
- It protect & allows maximum air to go over the top of the vehicle & allows only minimal quantity of air pass underneath the vehicle
- Improves & do not allow water entry underneath

### 2. Advantages

- Tested & validated for THAR
- Easy to fit with clips & brackets
- Automotive PP grade material give strong strength

### 3. Technical Specifications

- PP material
- Mounted with locking clips & bracket
- Set of 2 pcs
- Black - as molded part

PART NUMBER	PART DESCRIPTION	Applicability
AT00255	Thar Front Bumper Air Dam Kit	All Variant

**mahindra**