

XUV700 - Wireless Android Auto Connection Procedure

Android Auto brings the apps from the Android phone screen to the vehicle's infotainment display so that the driver can focus while driving. One can control the features like navigation, maps, calls, text messages, and music from the infotainment using the Android Auto



The infotainment system in the XUV700 supports a Wireless Android Auto option which eliminates the hassle of carrying and connecting the Android Phone to the infotainment through a compatible USB cable.

In order to connect wirelessly with the infotainment, the Android Auto taps into the Wi-Fi functionality of the smartphone and the infotainment system. Therefore, along with the Bluetooth, the smartphone must be paired with the infotainment's Wi-Fi Access Point

This bulletin consists of the SOP for connecting the Wireless Android Auto to the infotainment and other compatibility details.

1 Using Android Auto (Wireless)

1.1 Prerequisites –

1. Any phone with Android 11 or above
2. A Google or Samsung phone with Android 10.0
3. A Samsung Galaxy S8, Galaxy S8+, or Note 8, with Android 9.0
4. Android Auto App for some phones
5. 5 GHz Wi-Fi support
6. An active data plan
7. Wireless Android Auto enabled in the phone

NOTE –

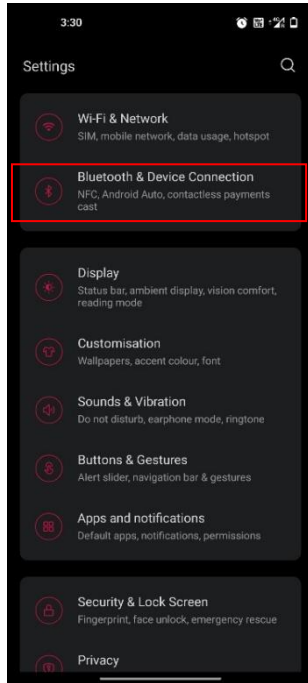
- Ensure to update to latest infotainment software version (version 7.02.11/ 7.02.12 or above) to enable Android Auto
- If a phone is not compatible for Wireless Android Auto, it can connect only using a USB cable.
- Refer the Google's support page for Android Auto for phone compatibility for both Wireless And Wired Android Auto <https://support.google.com/androidauto/answer/6348019?hl=en#zippy=%2Candroid-auto-on-your-car-display-wireless>

1.2 Enabling the Wireless Android Auto in the compatible phones

NOTE – Below screenshots may vary based on the phone OEM and the Android version installed in the phone

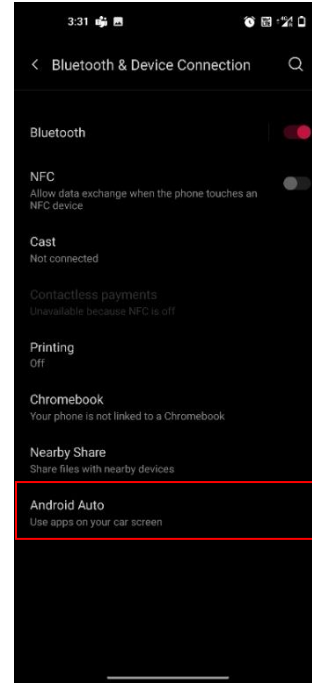
STEP 1 –

- Open Phone's Settings
- Open 'Bluetooth & Device Connection' / 'Connection & Sharing'



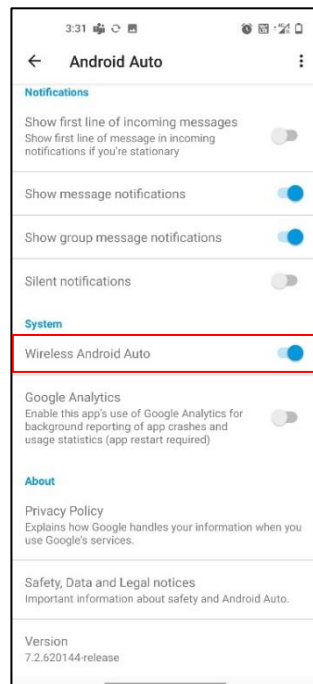
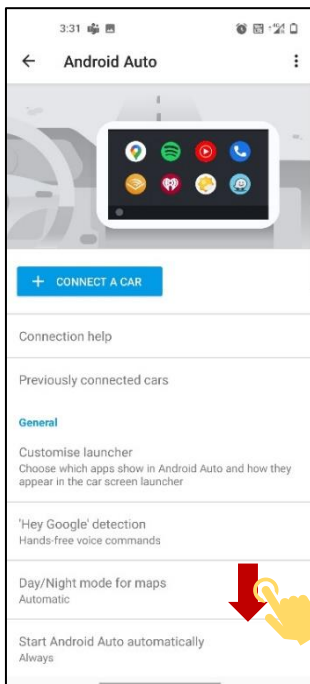
STEP 2 –

- Click on Android Auto



STEP 3 -

- Scroll down to the 'System' group and enable the 'Wireless Android Auto'



1.3 Getting Started with Wireless Android Auto

NOTE -

When connecting for the first time, ensure that the Transmission is in Park (for AT)/ Neutral (for MT) with the park brakes engaged.

Ensure Wireless Android Auto is enabled in the phone as mentioned in the above page

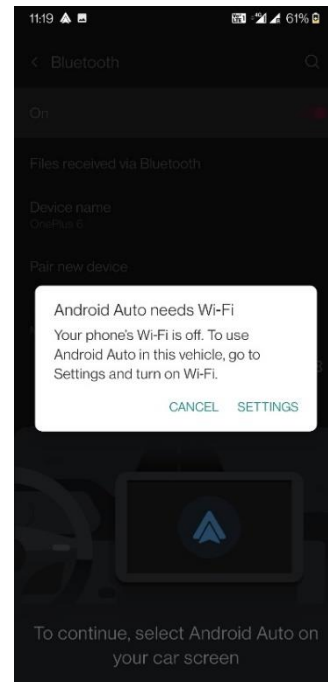
STEP 1 –

- Pair the Wireless Android Auto Compatible smartphone to the infotainment system via Bluetooth

STEP 2 –

- The infotainment will detect if the phone is Wireless Android Auto Compatible
- It will start the Wireless Android Auto Connection & the phone will now automatically connect to the vehicle's Wi-Fi

Note – If the phone's Wi-Fi is off, the system will ask to turn on the Wi-Fi



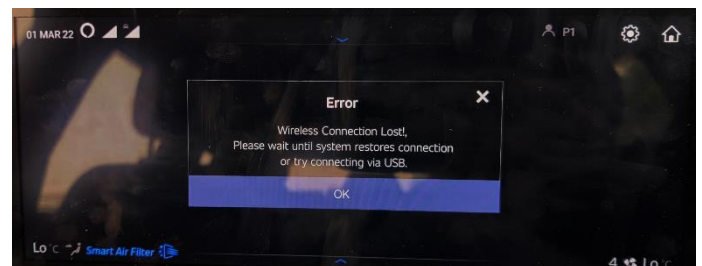
STEP 3 -

- Follow further instructions on the infotainment display to provide all required permissions for Android Auto
- Once done, user can open the Android Auto from the Home Screen of the Infotainment

Important Note –

When connected to the Android Auto Wirelessly, do not perform any of the following

- 1) If the Phone's Wi-Fi is connected to another Wi-Fi network, the wireless android auto session will close
- 2) Turning OFF the Wi-Fi or Bluetooth in the phone will disconnect Wireless Android Auto
- 3) Generating a new Wi-Fi password in the infotainment when connected to Wireless Android Auto will disconnect the session



Infotainment Error Pop-Up when Wi-Fi connection with the phone gets lost