

Mission:

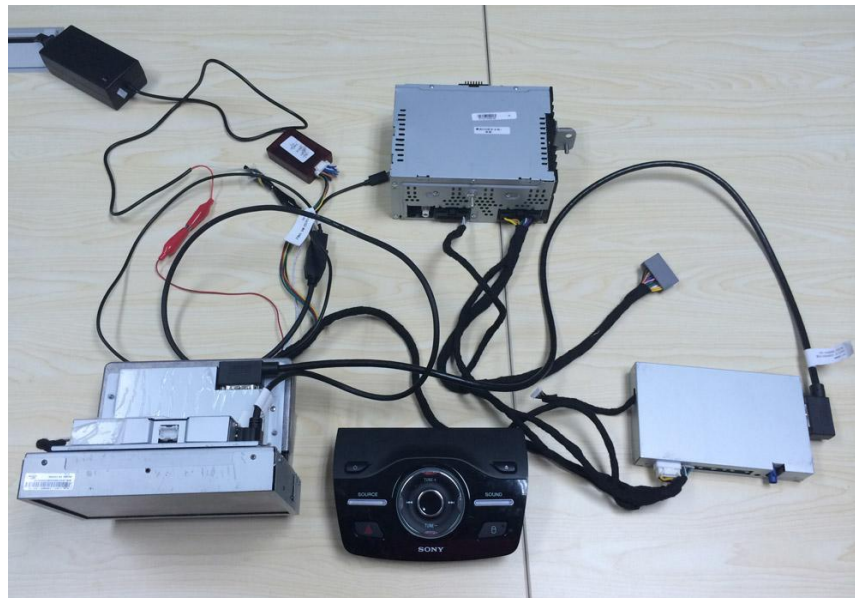
Keep OEM head unit and factory panel, upgrade OEM audio system in medium configuration cars and make it looks and feels exactly like the OEM navigation system equipped in top level cars.

Available for:

2014 -2015	Super Duty	2015	Transit	2013-2015	F-150	2014-2015	Transit Connect
2014-2015	Taurus	2013-2015	C-Max	2013-2015	Fusion	2014-2015	Focus
2014-2015	Flex	2014-2015	Fiesta	2014-2015	Explorer	2013-2015	Escape
2013-2015	Kuga	2013-2015	Edge	2015	Mustang	2015	Expedition

Features and specifications:

- 1, Fully keep the SYNC MyFord Touch system in installation; those high quality OEM CD player, Bluetooth, radio and audio out system which integrated in SYNC MyFord Touch system are remained and works well in both of OEM audio system and navigation interface system.



- 2, All cables and harness are designed exactly same as OEM specifications.



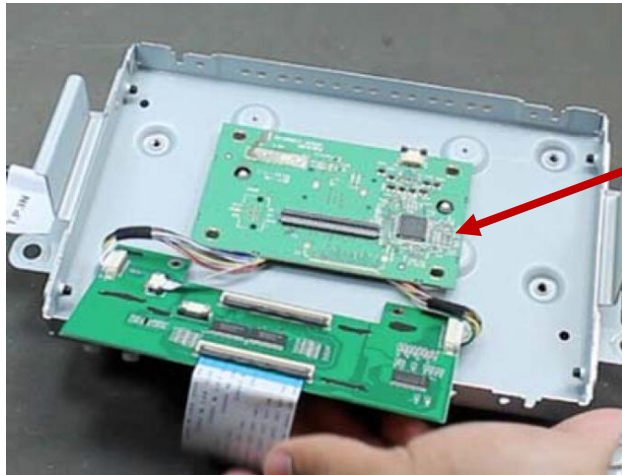
- 3, Hassle free and seamless plug and Play installation, brings no harm and risk to OEM SYNC MyFord Touch system; **Don't need take risks of opening the casing of touch screen unit and get in LCD-IN or TP-IN cables, boards or harness.**



- 4, Perfect fixing solution: the video connection unit is fixed between factory panel and SYNC Module with OEM Ford socket (the 91 Pin sockets were supplied by OEM Ford supplier in US) and connect navigation interface unit with LVDS cable.



Compare with products from OTHER SUPPLIERS, they usually disassemble the OEM TFT panel and get video cable and daughter board in it.



Other suppliers usually open the original TFT panel to insert connection board

- 5, Built in navigation system, multi-media player, HDMI video input and could support some external device like, DVR, DVB-T and others.



- 6, Either of the Android system smart phone and iPhone can be connected with navigation interface unit through HDMI cable, and mirror the video tapes or pictures in the cell phone on the factory panel.



7, Utilize FPGA technology and make GUI of interface system looks exactly like GUI of OEM SYNC MyFord Touch system.



Sintegrate GUI

OEM GUI

8, **Completely keep OEM user experiences:**

Users could switch into navigation interface system from OEM audio system through click the “navigation / more” icon on the top right corner of OEM main menu, it’s exactly same experiences as OEM audio system which built in navigation system already.



OEM main menu

interface main menu

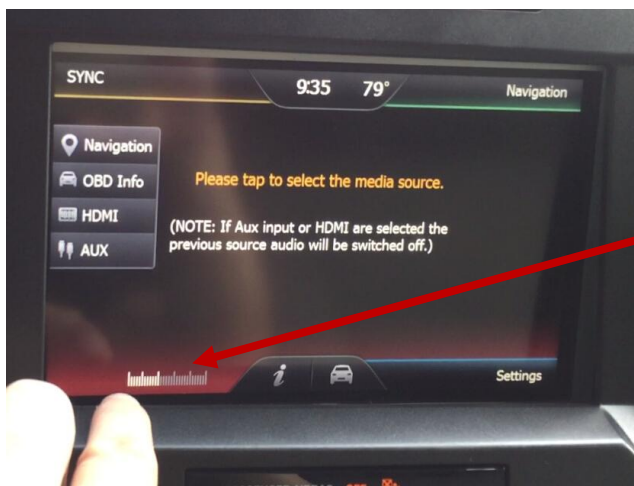
9, Calling coming through OEM Bluetooth to your cell phone, after pairing your cell phone with Bluetooth of SYNC MyFord Touch system. To secure safe and convenient driving, a bar will pop up on the bottom of screen with Answer or Reject menu for your choice.



Answer or Reject can be chosen conveniently and safely with touch control.

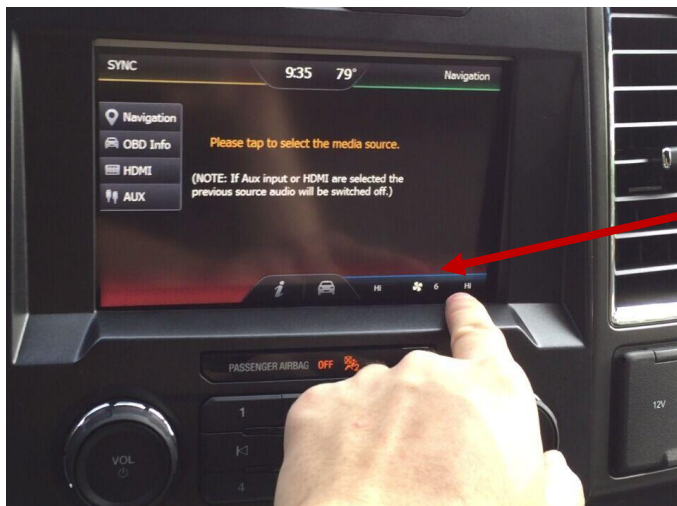
10, The navigation interface system can be completely compatible with SYNC MyFord Touch system harmoniously. All the functions, knobs and buttons which integrated in OEM head units system works quite well as before after interface system installation.

A, Factory volume knob works well in both of SYNC MyFord Touch system and Interface system.



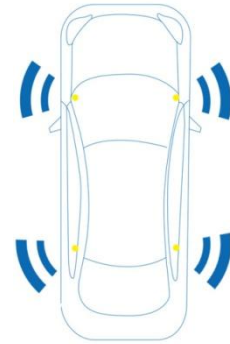
The volume knob works well in navigation interface system same as in OEM system

B, Air conditioner control system can be worked quite well in both of SYNC MyFord Touch system and interface system.

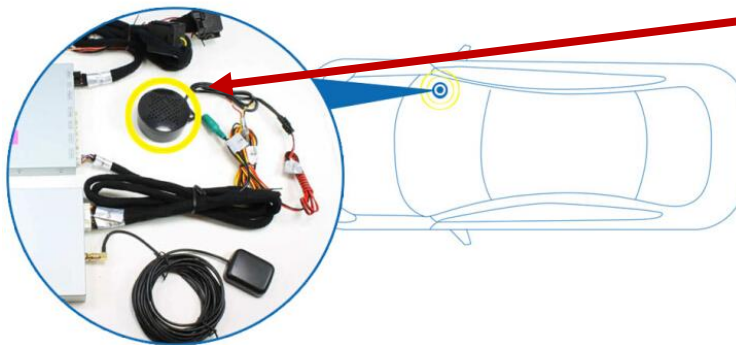


The volume knob works well in navigation interface system same as in OEM system

11, Dual CAN technology makes the navigation tips sound from OEM speaker beside driver side, while the the other OEM speakers still play radio or music of media sources.

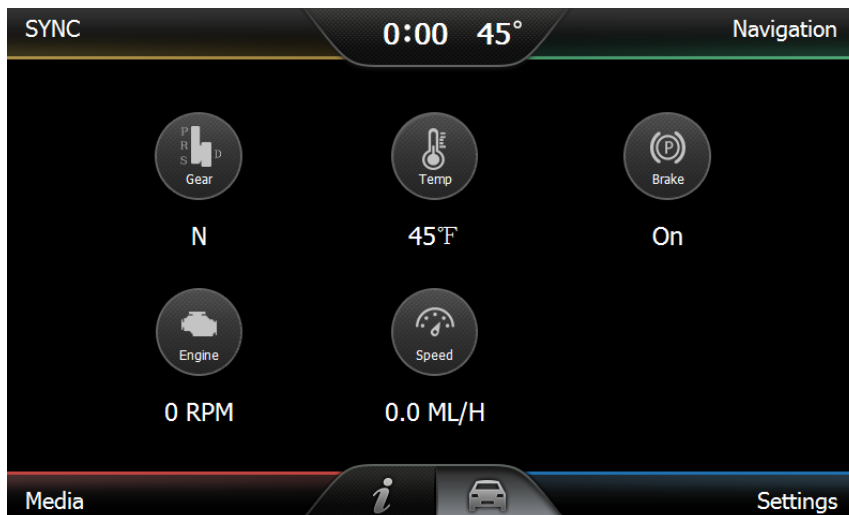


Compare with our solution, products from other suppliers usually sound out from external speaker.



Other suppliers usually make the navigation sound out from external speaker.

12, Built in CAN BUS decoding solution which is completely compatible with OEM CAN BUS system, decoding and catching these OBD information like speed, illumination, brake status, door status, power supply condition and temperature



13, support both of OEM car rear camera and after market rear camera, users could set and choose “OEM” or “After market” according to the car configurations.



Users could choose properly according the cars configurations.

14, MTK3360 solution, ARM11 platform with WIN CE 6.0 system. All APPS are designed by Sintegrate Electronics, our capable and experienced R&D team could help customer achieve their ideas and concepts, personalize requests and OEM services are secured.

Technical Specifications:

Item	Description
CPU	MT3360 ARM11
CPU Main Frequency	837M
ROM	DDR II 512M
Flash	Samsung K9F2G08U0C 256M
OS	WINCE6.0
Video Decoder	1080P All digital decoding
Audio Sounds	DSP Audio processing
USB	USB2.0, Support factory USB and Aux
Bluetooth	hands-free calls, A2DP, history log etc.
GPS	MT3336

Application chart:

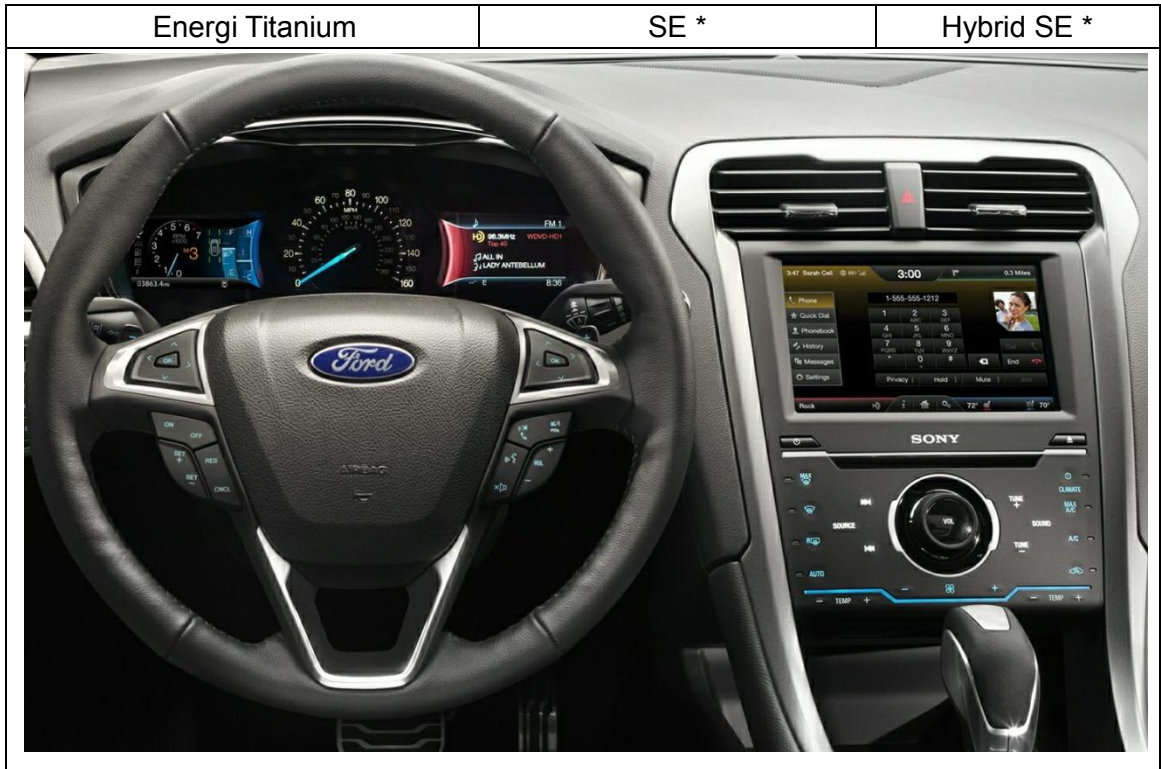
2015	Ford Mustang
GT Premium Convertible	GT Premium Fastback
EcoBoost Premium fastback	EcoBoost Premium Convertible



2013-2015	Ford Focus	
Titanium Sedan	Titanium Hatch	Electric
SE Sedan *	SE Hatch *	ST *



2013-2015	Ford Fusion / Mondeo	
Titanium	Hybrid Titanium	Energi SE



2015	Ford Expedition	
Limited	Limited EL	King Ranch
Platinum EL	Platinum	King Ranch EL



2013-2015	Ford Taurus
-----------	-------------

Limited	SHO	SE *
---------	-----	------



2013-2015	Ford Edge
-----------	-----------

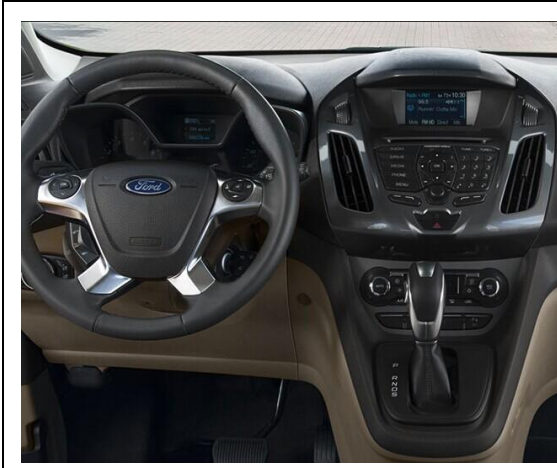
Sport	Limited	SEL *
-------	---------	-------



2013-2015		Ford Flex	
SE	Limited		
			

2013-2015		Ford Explorer	
XLT	Limited	Sport	
			

2014-2015		Ford Transit Connect	
Titanium Wagon *	XLT Van *	XLT Wagon *	



MyFord Touch® with Rear View Camera - includes AM/FM Stereo with Single-CD Player, HD Radio,™ SiriusXM Satellite Radio, SYNC® with USB, 6.5" LCD Touch Screen



2013-2015		Ford F-150	
Lariat		King Ranch	Platinum Wagon
FX2 *		FX4 *	SVT Raptor *



2015		Ford Transit	
Van *		Wagon XLT *	



2013-2015		Ford Escape	
Titanium		SE *	



2013-2015		Super Duty	
F-250 Lariat	F-350 Lariat	F-250 King Ranch	
F-350 King Ranch	F-350 Platinum	F-250 Platinum	
F-450 Lariat	F-450 King Ranch	F-450 Platinum	

