



**MERIDIAN**

EXTERIOR DESIGN



5 PLANTS

## NORTH AMERICA

**BELVIDERE ASSEMBLY PLANT,  
ILLINOIS, USA**  
Jeep Cherokee

**TOLEDO NORTH ASSEMBLY  
PLANT, OHIO, USA**  
Jeep Wrangler

**TOLEDO SOUTH ASSEMBLY  
PLANT, OHIO, USA**  
Jeep Wrangler

**JEFFERSON NORTH ASSEMBLY  
PLANT, MICHIGAN, USA**  
Jeep Grand Cherokee/SRT

**TOLUCA, MEXICO**  
Jeep Compass

1 PLANT

## LATAM

**GOIANA ASSEMBLY PLANT,  
PERNAMBUCO, BRAZIL**  
Jeep Renegade  
Jeep Compass

1 PLANT

## EMEA

**MELFI PLANT, ITALY**  
Jeep Renegade  
Jeep Compass

2 PLANTS

## APAC

JOINT VENTURES:

JV with GAC in China  
JV with Tata in India

**CHANGSHA PLANT, CHINA**  
Jeep Cherokee

**RANJANGAON PLANT, INDIA**  
Jeep Compass

**Jeep**<sup>®</sup>



**MERIDIAN**

**MERIDIAN**

EXTERIOR DESIGN



MERIDIAN



*Spisto*

# MERIDIAN

## LIGHTING DESIGN

Day Appearance

Night Appearance

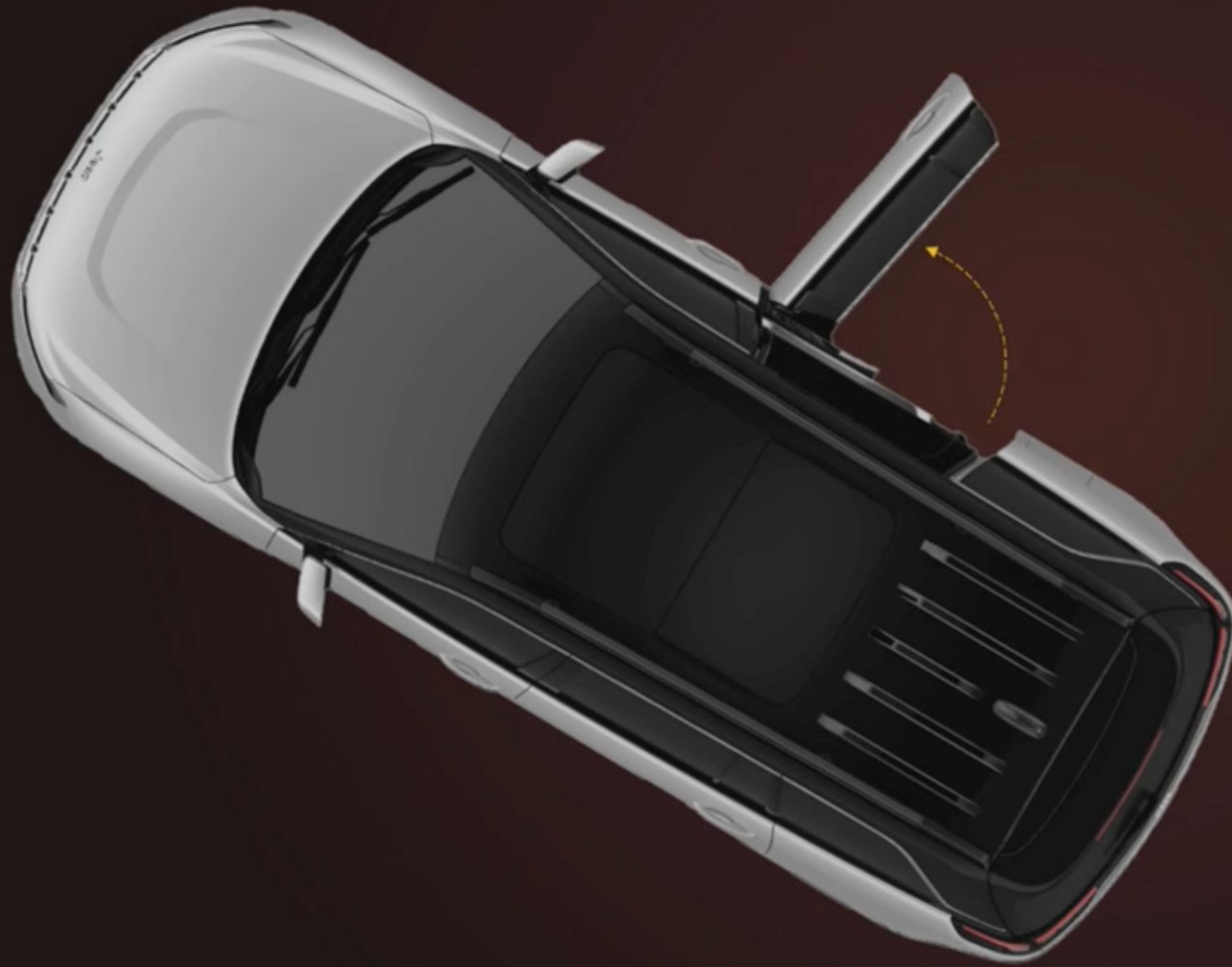
DRL

Turn/Position

Fog



# EASE OF ACCESS



**80°**

Rear Door Opening Angle

Competition - 1

66

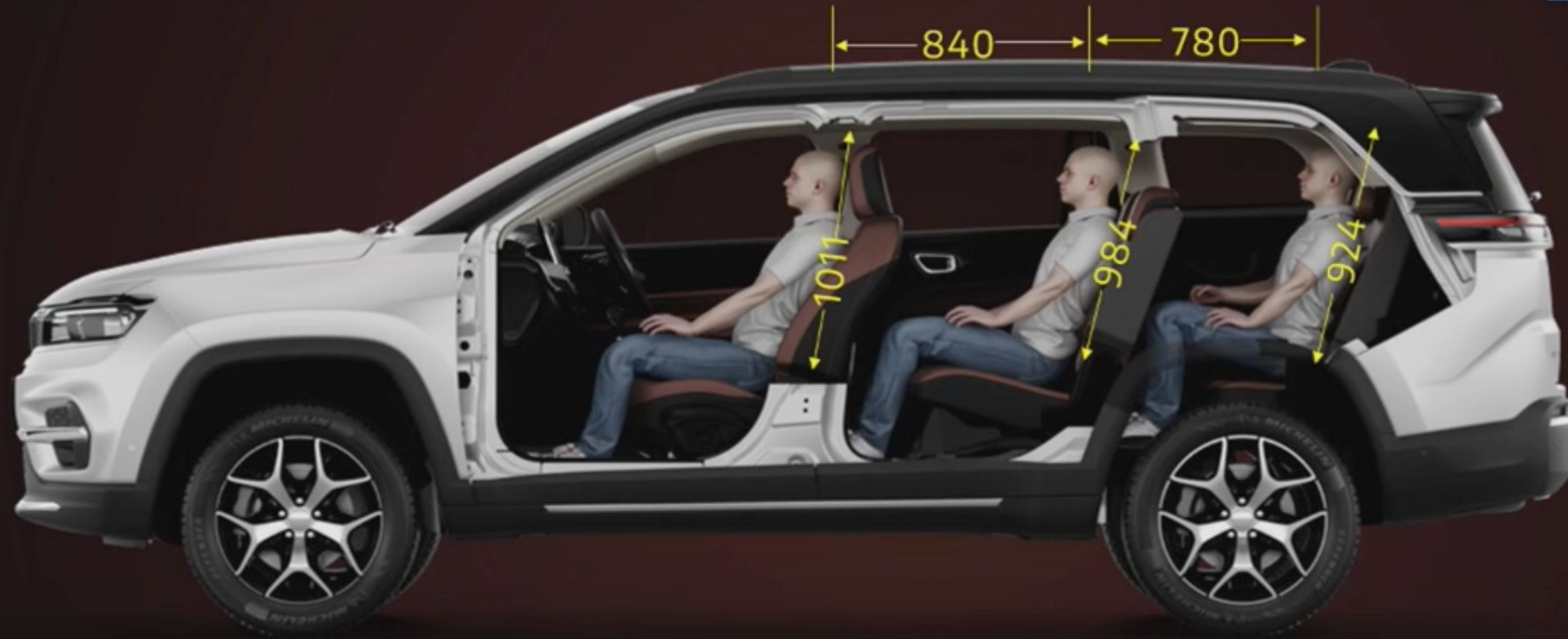
Competition - 2

65





# SPACE FOR ALL



**840 (mm)** Couple Distance, 1<sup>st</sup> to 2<sup>nd</sup> ROW

Competition - 1	835
Competition - 2	835

**780 (mm)** Couple Distance, 2<sup>nd</sup> to 3<sup>rd</sup> ROW

Competition - 1	729
Competition - 2	732



**MERIDIAN**

WHEEL DESIGN



18" Diamond Cut  
& Painted Gloss Black



**MERIDIAN**

LIGHTING DESIGN



**MERIDIAN**

Jeep



Bi-Function LED PROJECTOR w/AFS

LED REFLECTOR Hi-Beam

DRL&TURN



DRL



TURN



BI-FUNCTION



HI-BEAM

MERIDIAN

Jeep



TURN



TAIL



TAIL / STOP

# REDEFINING EXPECTATIONS & BENCHMARKS



BEST IN SEGMENT COMFORT

SOPHISTICATION REDEFINED

SEGMENT DEFINING FEATURES & CAPABILITY

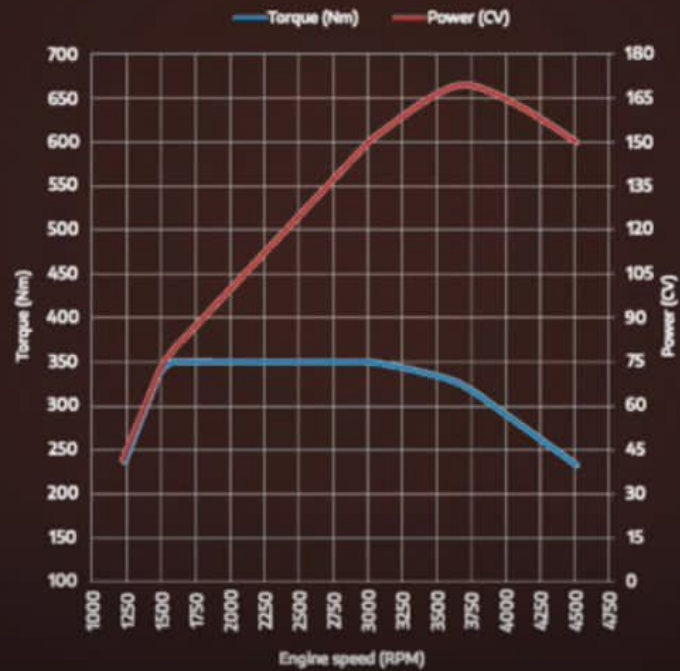
GLOBAL STANDARD SUV MADE IN INDIA



# POWER YOUR ADVENTURES



## Segment first 2.0L Turbo Diesel 9AT FWD



- 2.0L Turbo Diesel 9AT FWD
- 2.0L Turbo Diesel 9AT AWD
- 2.0L Turbo Diesel 6MT FWD



## IN SUMMARY



### BIGGEST CABIN SPACE

MOST LEG ROOM / HEADROOM / WIDEST CABIN

### BEST PERFORMANCE

FASTEST ACCELERATION / HIGHEST POWER to WEIGHT RATIO / HIGHEST TOP SPEED

### SAFEST AND MOST COMFORTABLE RIDE

STRONGEST UNIBODY ARCHITECTURE / LOWEST ROLL ANGLE / BEST STEERING

### 10.1 INCH (25.6) TOUCHSCREEN



### SEGMENT FIRST 2.0 L TURBO DIESEL 9AT FWD

80° REAR DOOR OPENING ANGLE

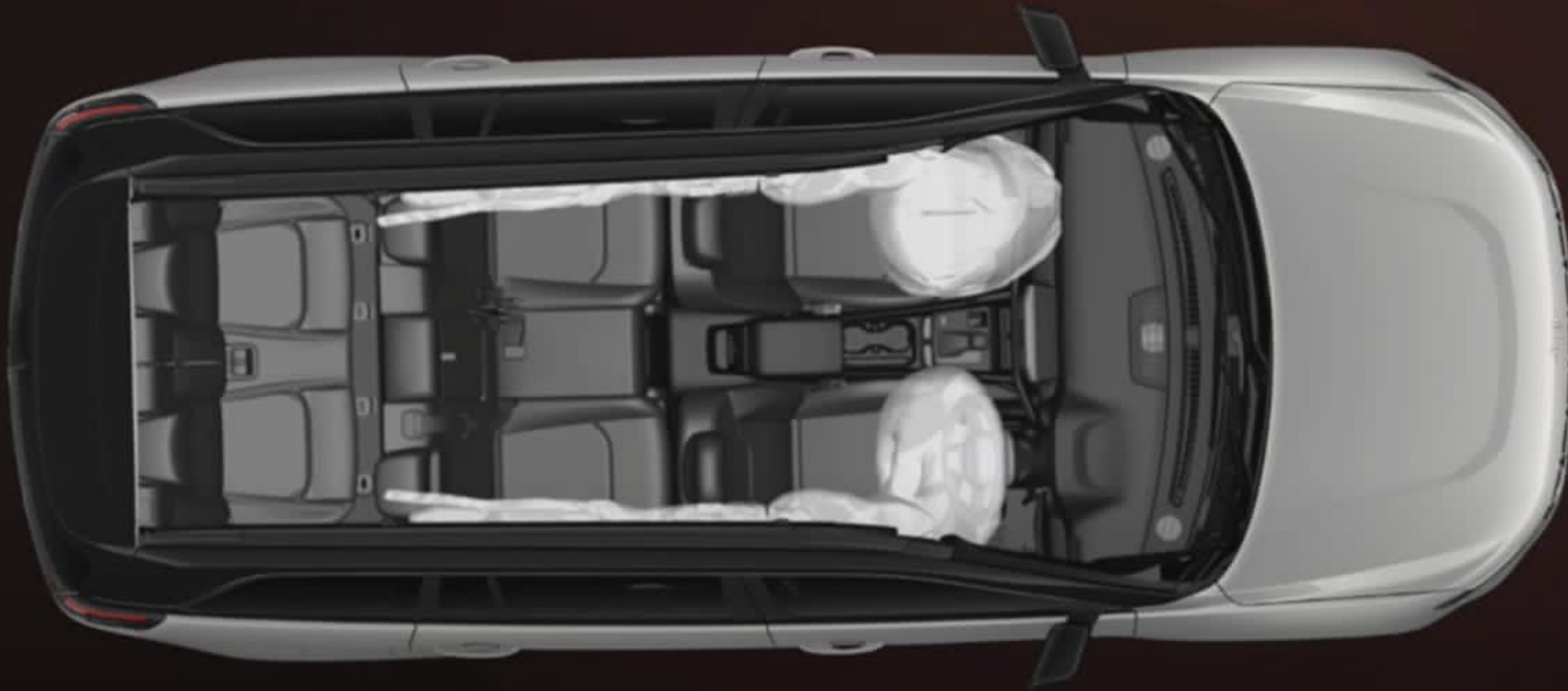
INDEPENDENT SUSPENSION WITH FSD + HRS

3<sup>rd</sup> ROW DEDICATED AC-EVACUATOR UNIT



# UNCOMPROMISED SAFETY

6 AIRBAGS ACROSS ALL VARIANTS



60+ SAFETY & SECURITY FEATURES



KOA



DrOA



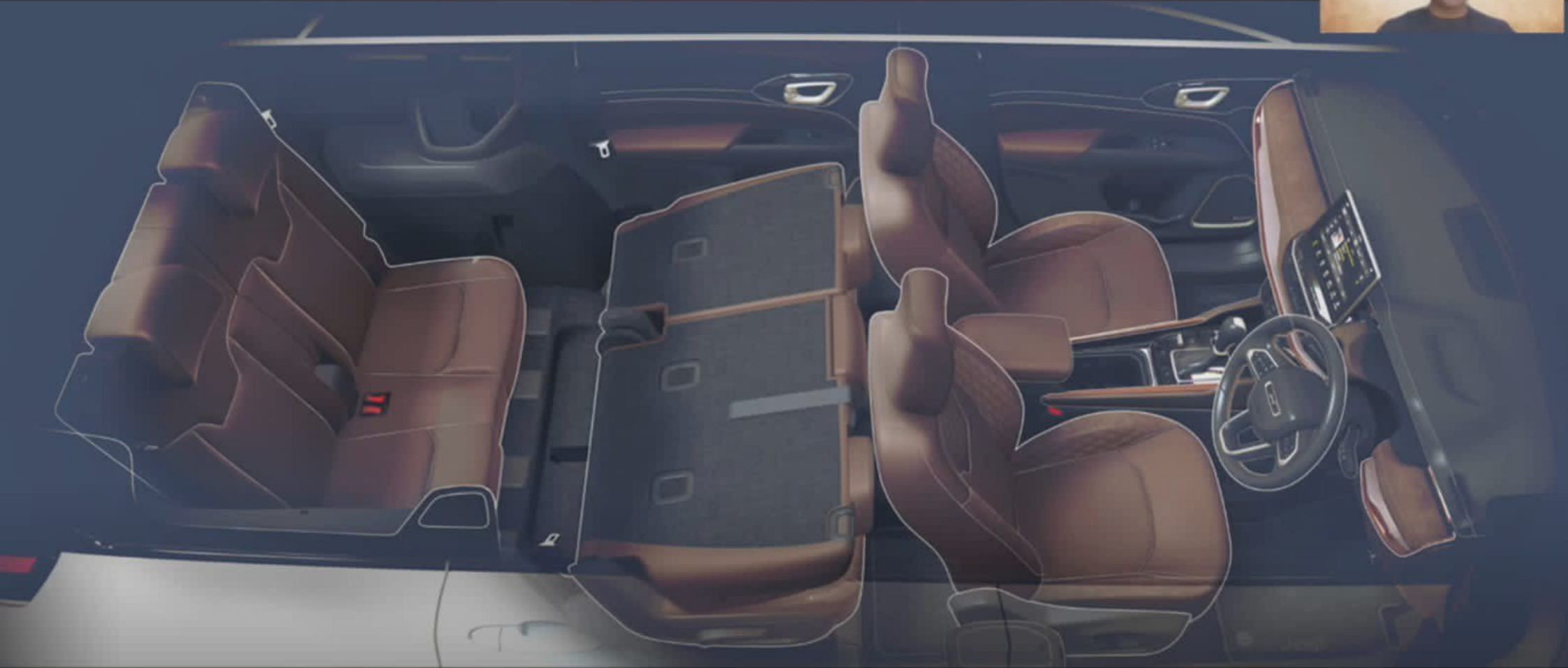
MERIDIAN



*Equinox*

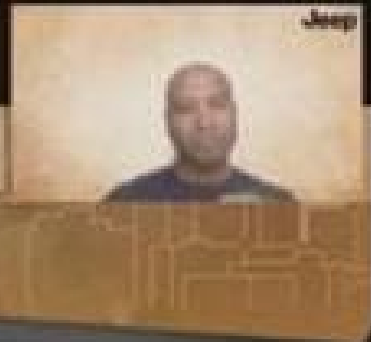
**MERIDIAN**

Jeep



**MERIDIAN**

BLACK & EMPERADOR BROWN



# MULTI ZONE CLIMATE CONTROL

30% FASTER CABIN COOLING  
(vs COMPETITION)



**MERIDIAN**

Jeep



BLACK & EMPERADOR BROWN



Premium Soft Mid-bolster

Hydrographic Applique

Liquid Chrome Plated Deco

**MERIDIAN**

Jeep





MERIDIAN

Jeep



25°+

25°

27°

29°

21° - 32°

(Multi-position every 2°)

**MERIDIAN**

BLACK & EMPERADOR BROWN



MERIDIAN



27°  
29°

# MERIDIAN

BLACK & EMPERADOR BROWN



	1 <sup>st</sup> Row	2 <sup>nd</sup> Row	3 <sup>rd</sup> Row
Seat Insert	McKinley leather w/ Axis II Perforation	McKinley leather w/ Axis II Perforation	McKinley Lux Vinyl w/ Axis II Perforation
Seat Inner bolster & Neck Area	McKinley Lux Vinyl w/ Quilting	McKinley Lux Vinyl w/ Quilting	McKinley Lux Vinyl

A close-up, high-angle photograph of the center console in a Jeep Meridian. The console is finished in a dark, metallic or carbon-fiber-like material with a brushed texture. It features a gear shift lever and a handbrake, both with a similar brushed finish. The surrounding interior is upholstered in a dark brown leather with white stitching. The lighting is dramatic, highlighting the textures and contours of the console.

**Jeep**

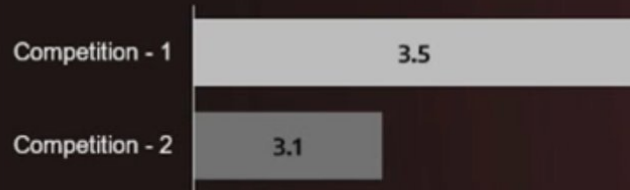
**MERIDIAN**

# EFFORTLESS STEERING



## 2.2

Parking Torque (Nm)

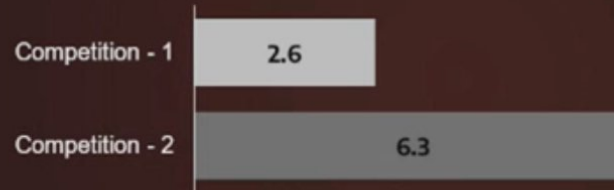


LOWEST STEERING EFFORT  
PRECISE CONTROL



## 4.3

Dynamic Torque (0.4 g)

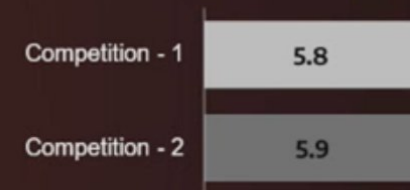


MORE HEFT TO THE STEERING  
LESS DRIVER FATIGUE



## 5.7

Turning Radius (m)



LOWEST IN SEGMENT  
EASE OF MANUEVERABILITY

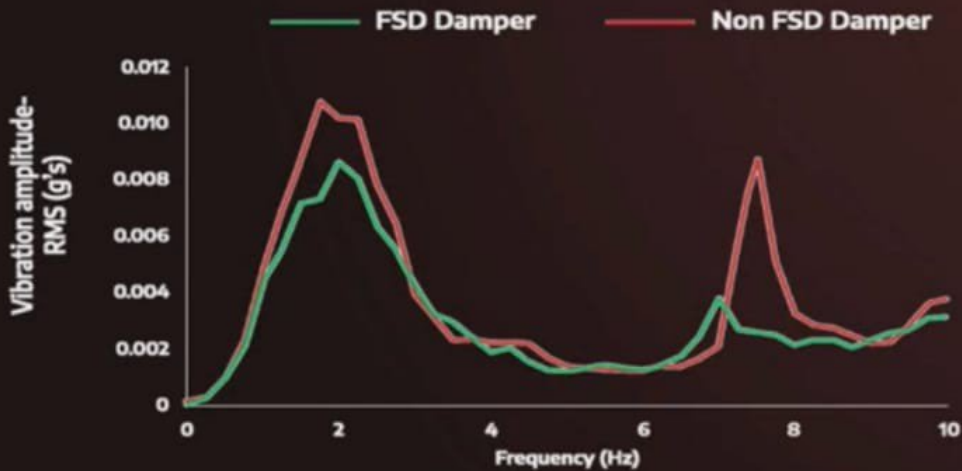




# UNMATCHED CAPABILITY & COMPOSED DRIVING DYNAMICS

## HYDRAULIC REBOUND STOPPER FREQUENCY SELECTIVE DAMPING

- 25% REDUCED FLOOR VIBRATION
- SMOOTH DRIVE & COMFORT
- IMPROVED STABILITY



## CONVENIENT POWERLIFT GATE



- Powered Liftgate
- Key fob & 3 Convenient Switch Location
- Obstacle Detection
- Anti-pinch Sensing Safety Feature
- Customized Tailgate Opening Height



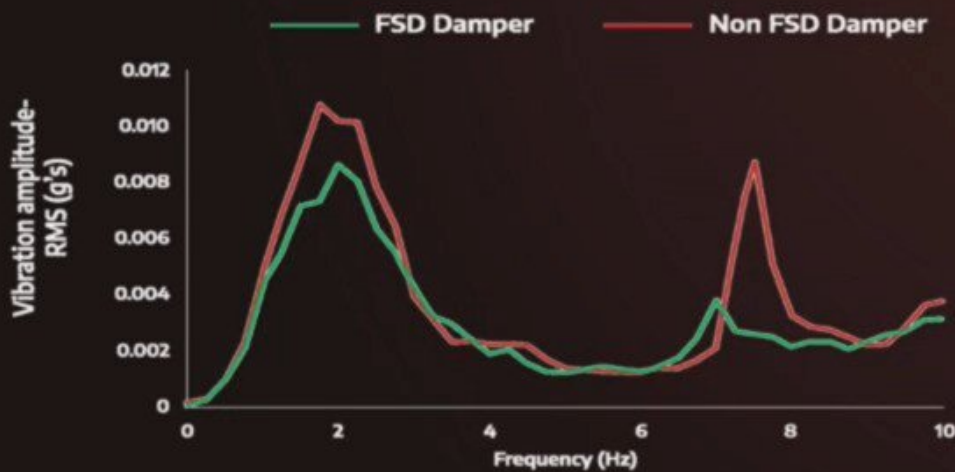


# UNMATCHED CAPABILITY & COMPOSED DRIVING DYNAMICS



## HYDRAULIC REBOUND STOPPER FREQUENCY SELECTIVE DAMPING

- 25% REDUCED FLOOR VIBRATION
- SMOOTH DRIVE & COMFORT
- IMPROVED STABILITY



Jeep

MERIDIAN

9 SPEED  
AUTOMATIC  
DIESEL

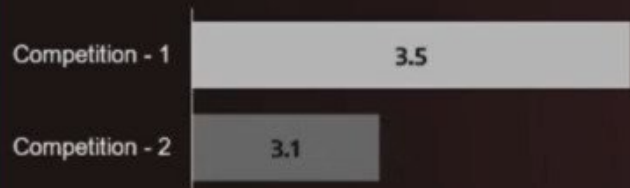




# EFFORTLESS STEERING

## 2.2

Parking Torque (Nm)



LOWEST STEERING EFFORT  
PRECISE CONTROL



## 4.3

Dynamic Torque (0.4 g)

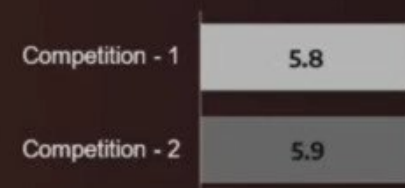


MORE HEFT TO THE STEERING  
LESS DRIVER FATIGUE



## 5.7

Turning Radius (m)



LOWEST IN SEGMENT  
EASE OF MANUEVERABILITY





# 2021

MADE IN INDIA  
JEEP WRANGLER & NEW COMPASS



# 2022

MADE IN INDIA  
JEEP MERIDIAN, GRAND CHEROKEE  
& COMPASS TRAILHAWK

