



HONDA



Jazz



It's everybody's kind of car.

Whether you're looking for an outdoor experience or a night out on the town, the Honda Jazz is ready. Its flexible ULTRA seats transform the spacious interior into different modes to carry you, your friends, and all you need on whatever adventure you choose. The possibilities are endless with the Honda Jazz. No wonder it's everybody's kind of car.



Style that looks good on everybody.

The Honda Jazz is big on space as it is on stylish exterior features. The sleek headlights, 16-inch alloy wheels and trendy tailgate are just some of the features that will keep heads turning.



Halogen Headlights

Sleek and thin Halogen Headlights enhance the profile of the Jazz.



Front Fog Lights

Redesigned Fog Lights light your way further.



16" Alloy Wheels

A sporty set of 16-inch multi-spoke Alloy Wheels.



Auto Retractable Door Mirror with Turning Lights

The door mirrors come with integrated turn lights and automatically retract for your convenience.



Rear Combi Lights

High-quality LEDs in the rear lamps give the Jazz a sporty look.



Tailgate Spoiler

The tailgate is topped off with a stylish spoiler with an integrated third brake light.



Chrome Rear License Garnish

The new chrome garnish design adds a touch of style to the tailgate.

Fuel-saving performance for everybody.

Balancing performance and fuel-efficiency comes easy for the Honda Jazz. Its i-VTEC engine with Continuous Variable Transmission (CVT) uses Honda's Earth Dreams technology so you can enjoy better acceleration and improved fuel economy of 17.81 km/L.*



1.5L i-VTEC Engine

Maximum power:
120PS [88kW] / 6,600rpm

Maximum torque:
145Nm [14.8kg-m] / 4,600rpm



Continuous Variable Transmission (CVT)

With Honda's Earth Dreams Technology, the CVT puts less stress on the environment and more thrill in the driver's hands.



Actual model may vary in detail from image shown.
* Based on New European Driving Cycle (NEDC) mode driving.



7" Display Audio

Turn up the music at the touch of your fingers with the built-in 7-inch touchscreen that comes with smartphone style apps.



Touch Panel Auto Air Conditioning

The fully automatic air conditioner is controlled by an electrostatic touch panel for a touch-sensitive interface.



LCD Meter Cluster

The large, stylish LCD Meter Cluster gives you an attractive view of the odometer, fuel range, and other vital info.



Hands-Free Telephone Steering Switch

Accept or reject calls hand-free and safely.



Smart Entry & Push Start Button

The smart entry system detects when your key fob is nearby so you can lock and unlock with ease. Once you're in, use the Push Start Button to ignite the engine with your fingertips.

Technology for everybody.

Every feature in the Honda Jazz is designed for your driving pleasure. Its multi-function steering wheel comes with a Steering Audio Switch so you can handle your music while staying focused on the road. There is also a 6-speaker audio system to keep everybody happy.



Leather Steering and Gear Knob

Everybody loves the luxury of a leather wrapped steering and gear knob.

Siri Eyes Free Mode

Connect a compatible smartphone to let Siri perform tasks for you.



Call Function

Speed dial to make calls via Bluetooth sync.



HDMI Connectivity

Mirror apps from smartphones with a HDMI cable.



Satellite Navigation System

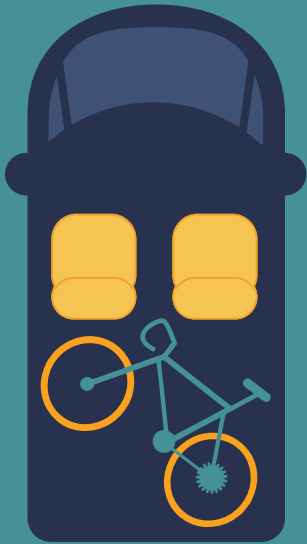
Connect via smartphone and find your way with the Navigation app, which comes with turn-by-turn directions.*



* Only applicable for selected smartphones and is subject to additional charges.

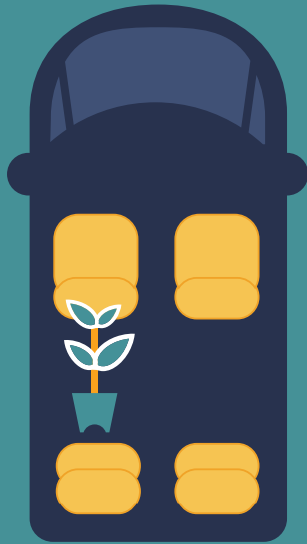
Space for everybody's everything.

Everybody has different needs and everything is important. Something the Honda Jazz understands. Just flip its ULTRA Seats into various modes to transform the interior into a versatile loading space.



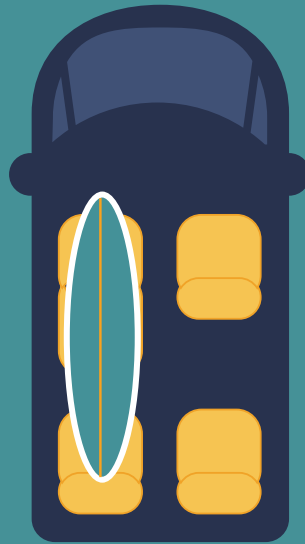
Utility Mode

Lower both rear seats to free up space in the back. There is even room for a bicycle in this mode. Bring on the bulky items.



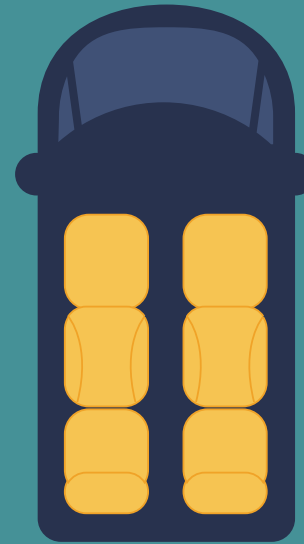
Tall Mode

Fold up the rear seats and you will have plenty of floor to ceiling space, enough for tall items like potted plants and furniture.



Long Mode

Recline the front passenger seat and lower the rear seat to fit a surfboard and other long items.



Refresh Mode

Recline both front seats into refresh mode for a comfortable rest area for two.

Unique Centre Tank Layout

The secret to this versatile loading space is all in the unique centre fuel tank layout. Most cars have fuel tanks under the rear seats, but not the Jazz. This makes way for more space at the rear for all your storage.



Rear Seat Reclining

The rear seats can also be reclined at one touch for more space.

Space for every little thing.

Everybody's kind of car has everything thought out. Including the littlest of things. Its interior is packed with enough cup holders and compartments to store all your essentials in all the right places.



Glove Box

Store all your car accessories and essentials in the handy glove box up front.



9 Cup Holders

The Jazz has more than enough cup holders to ensure you enjoy a spill-free ride.



Centre Console Storage with Armrest

The front armrest comes with a built-in USB port and even has enough room to store a touchscreen tablet.



USB and HDMI Ports

Charge multiple electronic devices in the USB ports or plug into the HDMI ports for a complete audio-visual experience.

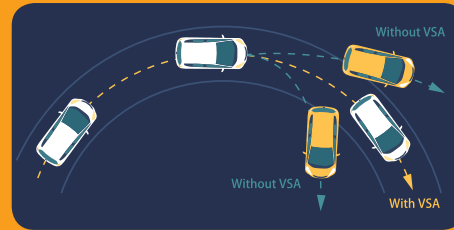
Safety for everybody.

With a variety of smart safety features, the Jazz has everyone covered. Thanks to Honda's G-CON technology impact absorbing structure, the Jazz doesn't just keep its driver and passengers safe, but everybody on the road too.



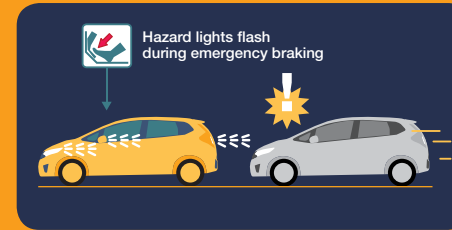
Front, Side and Curtain Airbags (6 Airbags)

The Jazz comes with advanced safety features like dual SRS airbags and side curtain airbags. The new i-Side airbags are designed to further protect driver and passengers.



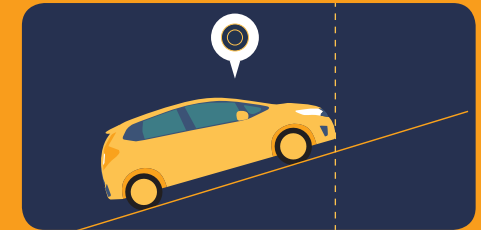
Vehicle Stability Assist (VSA)

The VSA system stabilises the Jazz by reducing understeer or oversteer in unexpected situations or around tight corners.



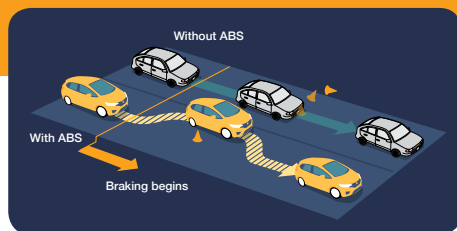
Emergency Stop Signal (ESS)

The rear brake lights and hazard lights flash automatically on sudden braking at unexpected road conditions or situations to warn nearby vehicles.



Hill Start Assist (HSA)

This way the Honda Jazz will not roll backwards when the brakes are released on an incline.



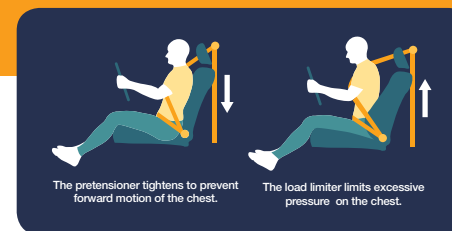
Anti-lock Braking System (ABS)

The ABS helps prevent wheels from locking in emergency braking situations to keep you on track safely.



Minimum Turning Radius

The small turning radius of 4.7m lets you U-turn safely in tight situations.



3-point ELR Seat Belts with Pretensioners and Load Limiters

The pretensioners in the seat belts tighten to prevent forward motion of the chest, while the load limiters limit excessive pressure on the chest.



ISO Fix

Worry no more about your child's safety. The Jazz is equipped with ISO Fix – the international standard for attachment points in child safety seats.

Specifications

Model	Honda JAZZ 1.5L		
Grade	S	E	V
ENGINE			
Engine Type	4 Cylinders, 16 Valve, SOHC i-VTEC		
Fuel Supply System	Electronic Fuel Injection		
Bore & Stroke (mm)	73.0 x 89.4		
Displacement (cc)	1,497		
Compression Ratio	10.3		
Maximum Power [PS(kW)@rpm]	120(88)/6,600		
Maximum Torque [Nm(kg-m)/rpm]	145(14.8)/4,600		
TRANSMISSION			
Transmission Type	Continuous Variable Transmission (CVT)		
Clutch Type	Torque Converter		
STEERING SYSTEM			
Type	Electric Power Steering (EPS)		
BRAKING SYSTEM			
Braking System Type (Front)	Ventilated Disc		
Braking System Type (Rear)	Drum		
DIMENSIONS			
Overall Length (mm)	3,955		
Overall Width (mm)	1,694		
Overall Height (mm)	1,524		
Wheelbase (mm)	2,530		
Thread (Front/Rear) (mm)	1,492/1,481		1,476/1,466
Ground Clearance (unloaded) (mm)	135		
Curb Weight (kg)	1,067	1,081	1,088
Fuel Tank Capacity (Litre)	40		
Seating Capacity	5		
TYRES & WHEELS			
Wheel Size	15" Steel Wheel with Cover	15" Alloy	16" Alloy
Tyre Size	175/65R15		185/55R16



Brilliant Sporty Blue Metallic
(B-593M)



Taffeta White
(NH-578)



Modern Steel Metallic
(NH-797M)



Alabaster Silver Metallic
(NH-700M)



Crystal Black Pearl
(NH-731P)

Major Equipment

Model	Honda JAZZ 1.5L		
Grade	S	E	V
EXTERIOR			
Halogen Headlights		•	
Front Fog Lights	-		•
LED Taillights		•	
Door Outer Handle	Body Colour		
Antenna	RR Micro		
Front Grille	Black	Black (High Glossed) with Chrome Plating	
Rear License Garnish	Black (High Gloss)	Chrome Plating	
Front Intermittent Wiper System		•	
Rear Wiper System		•	
Door Mirror with Turning Lights	-		•
INTERIOR			
Multi Information Combination Meter	Amber Illumination	Blue and White Illumination	
Upholstery Type and Colour	Fabric - Black		
Smart Entry with Push Start Button	-		•
Height Adjustable Driver Seat		•	
ULTRA Seat		•	
Rear Seat Reclining		•	
Air Conditioning	Manual		Touch Panel Auto
Tilt & Telescopic Steering Wheel		•	
Center Console Storage with Armrest	-		•
Leather Steering Wheel and Gear Knob	-		•
Steering Wheel Switch Audio Control	-		•
One Touch Turn Signal		•	
Front and Rear Power Window		•	
Power Adjustable Door Mirrors	-		•
Power Retractable Door Mirrors	-		•
Cup Holders		9	
Map and Trunk Light		•	
Front Seat Back Pockets	-		•
Vanity Mirror	Driver Only		Driver & Assistant

• Standard

* Specifications may vary and are subject to change without prior notice.

* Actual colour may vary in detail from colours shown.

Terms & conditions apply.

Model	Honda JAZZ 1.5L		
Grade	S	E	V
AUDIO			
Audio System with CD	Single Din	Standard Audio	7" Display Audio
Speakers	4		6
AUX Socket		1	
USB Socket	1		2
HDMI Socket	-		1
Accessory Socket		1	
Auto Volume by Speed	-		•
Hands-Free Telephone (HTF) Steering Switch Control	-		•
Voice Recognition Steering Switch Control	-		•
SAFETY			
G-Force Control Technology (G-CON) Body		•	
Advanced Compatibility Engineering (ACE) Body		•	
Dual Front SRS Airbags		•	
Side Curtain Airbags	-		•
Side Airbags	-		•
Anti-lock Braking System (ABS)		•	
Electronic Brake Force Distribution (EBD)		•	
Brake Assist (BA)		•	
Hill Start Assist (HSA)	-		•
Emergency Stop Signal (ESS)	-		•
Vehicle Stability Assist (VSA)	-		•
Front Seat Pretensioner Seatbelt with Double Load Limiter		•	
Driver and Assistant Seatbelt Reminder		•	
Rear Seatbelt 3-Point ELR (X3)		•	
Rear Seat ISO Fix		•	
4 Corner Reverse Sensor		•	
Ultrasonic Sensor		•	
Security Alarm with Immobiliser		•	

Honda New Service Package



5-year Warranty with Unlimited Mileage.*



Up to 6 FREE Labour Services alternating with paid service up till 100,000km.*

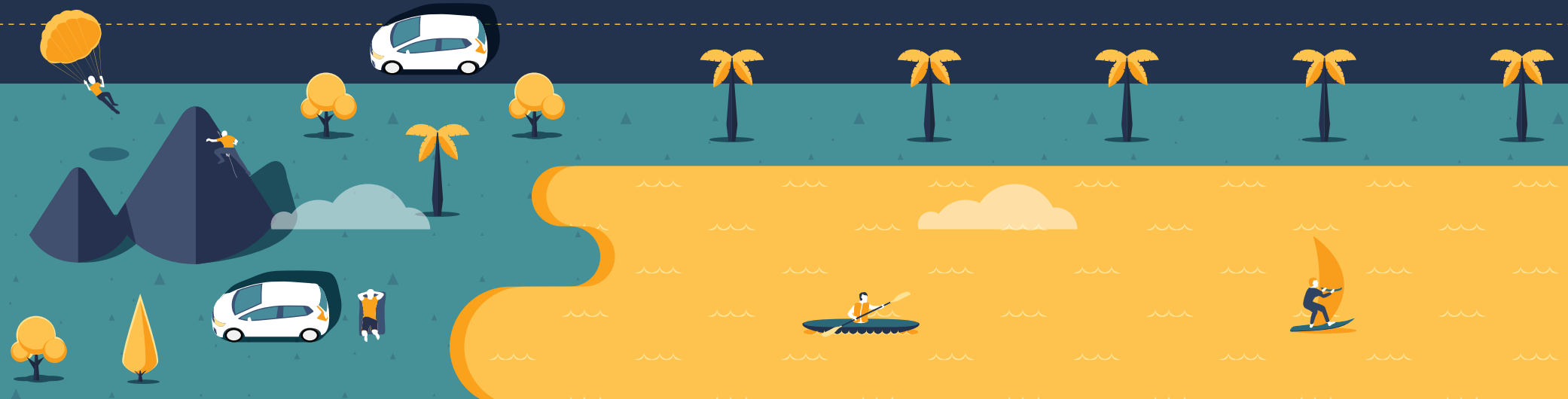


Service interval extended to every 10,000km.*



Authorised Dealer:

HONDA
The Power of Dreams



 Like us on
www.facebook.com/hondamalaysia

Honda Malaysia Sdn Bhd (532120-D)
Toll-Free No: 1800-88-2020 • www.honda.com.my


Printed on
recycled material